

HSPRI Rounds

Primary Care Data Reports for Ontario Health Teams: Frontenac, Lennox and Addington OHT

Dr. Mike Green

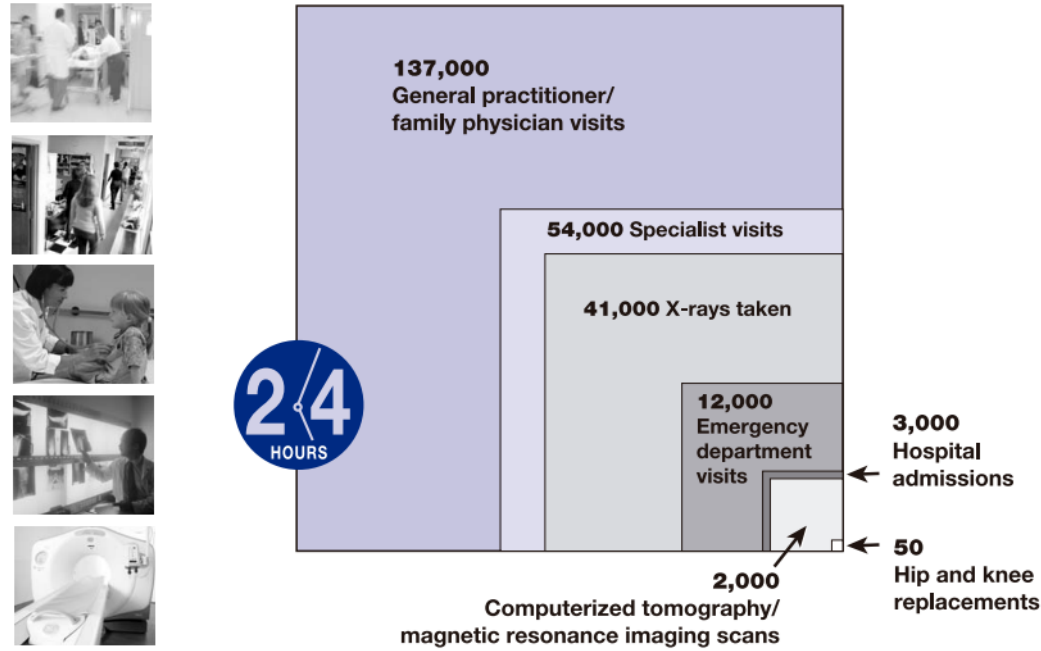
With acknowledgement to the Patient Attachment Working Group:

Rick Glazier, Shahriar Khan, Kamila Premji, Iman Bayoumi,
Liisa Jaakkimainen, Tara Kiran, Peter Gozdyra, Eliot Frymire

This presentation will be recorded for later viewing

Why primary care data is a key driver for OHTs?

Exhibit 1.1 Average number* of various health care services accessed each day, in Ontario, 2002/03



*Values rounded to the nearest thousand with the exception of hip and knee replacements, which were rounded to the nearest 10.

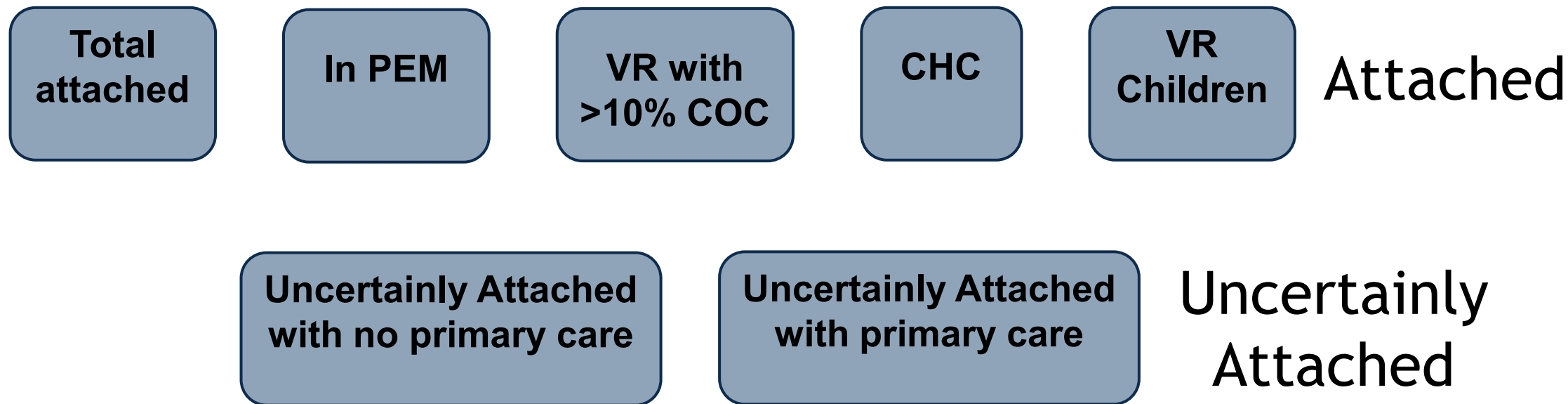
©Institute for Clinical Evaluative Sciences

Findings

- In 2002/03, approximately 140,000 people in Ontario—about 1% of the total population of 12 million—visited a general practitioner/family physician (GP/FP).
- There was also a large daily volume of specialized care (e.g., hospital care and visits to specialists) but it was much lower than the number of visits to GP/FPs.
- Each day, there were over 2,500 times more GP/FP visits than there were hip and knee replacements.

What is in the reports?

- ▶ Each Report has data for:
 - ▶ Specific OHTs and Ontario wide comparator data
- ▶ Each Report has attachment status measured as follows:



All tables report on **4 categories of data by row.**

Demographics

- Age
- Sex
- Rurality
- Income

Patient Characteristics

- Marginalization
- Recent immigrant
- Comorbidity(ADG)
morbidity(RUB)
- Chronic diseases(COPD,CHF, Diabetes)
- Frailty

Primary Care Indicators

- Enrolment model
- Primary care visits
- Continuity of care measures
- Primary care f/up after hospitalization

Health Care Utilization

- Palliative care
- Long term homecare
mental illness
- ED visits hospitalization
- ED and hospital acuity measures(CTAS and ACSC)
- Hospital readmissions

► Stratified based on health utilization characteristics identified by OHTs as priority populations of interest:

ED Visits

Hospitalizations

Frailty

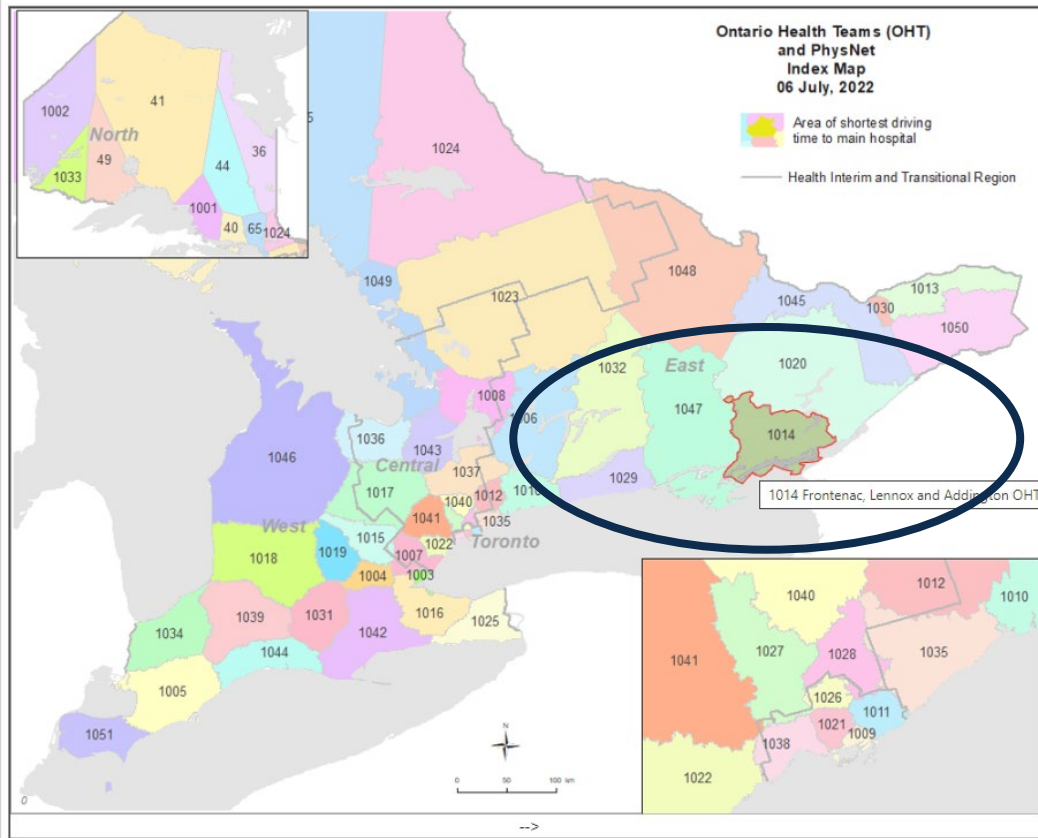
Home Care

Mental Health

Palliative

Report dissemination

Posted publicly online on the OCHPP platform: www.OntarioHealthProfiles.ca



Primary Care Data Reports for Ontario Health Teams (OHTs)

NEW 2022 Data Limitations for OHT-specific data

There will be new limitations to the data contained in 2022 OHT-specific reports. The limitations are a result of the lag in updating the attribution methodology used to derive the population numbers for OHTs. New births in the province and patients moving into, out of, and around the province are not captured in these analyses.

Specifically, please be aware of the following caveats, and note that these caveats do NOT apply to the 2022 data report for "All Ontario":

1. The N for under 5 years of age is low in the OHT-specific reports as children born in or moving to the region after the last attribution date are not captured in the data. We estimate a 30-40% discrepancy between the actual numbers and the numbers we were able to capture in the OHT-specific analyses.
2. All OHTs have seen their total attributed numbers fall due to the removal of people who have died, or no longer have OHIP numbers/no longer meet inclusion criteria (e.g., maximum age, years since last OHIP billing).

Due to these limitations, percentages should be used for data interpretation

Again, this limitation does not apply to all Ontario numbers as all Ontarians are included, even those not attributed to a specific OHT.

March 2022 Updates

Updated Primary Care Data Reports, including data up to March 31, 2022, are being released over the first quarter of 2023. As part of this update, age categories for <19 (<5, 5-9, 10-14, 15-17) have been added and some variable names updated (See PCDR Data Description or Summary for details).

Our Primary Care Data Working Group produced OHT specific Primary Care Data Reports (PCDR). The group includes: Dr. Michael Green, Dr. Richard Glazier, Eliot Frymire, Shahriar Khan, Dr. Kamila Premji, Dr. Imaan Bayoumi, Dr. Liisa Jaakkimainen, Dr. Tara Kiran, Lynn Roberts and Peter Gozdyra.

The reports use standard health administrative measures in primary care in conjunction with measures for attachment to a primary care provider to deliver a standardized document for Ontario Health Teams (OHTs). These reports are intended to provide a deeper understanding of the attributed population of each OHT.

How to access the Primary Care Data Reports

- Using the map or from the list below, select the OHT of interest

What is new with this 2022 Report...

1. Data update

All Ontario and OHT specific data tables and maps updated as of March 31, 2022.

2. Age groups

The <18 age group is further broken down into <5, 5-9, 10-14, 15-17.

Primary Care Data Report-Data limitations

Attribution methodology lag limits application of the data. Think of this update as an...

**Update in time to your
previously attributed population
from 2020**

Those that were new to Ontario, born, died, left Ontario, or did not meet the inclusion criteria are excluded in this update.

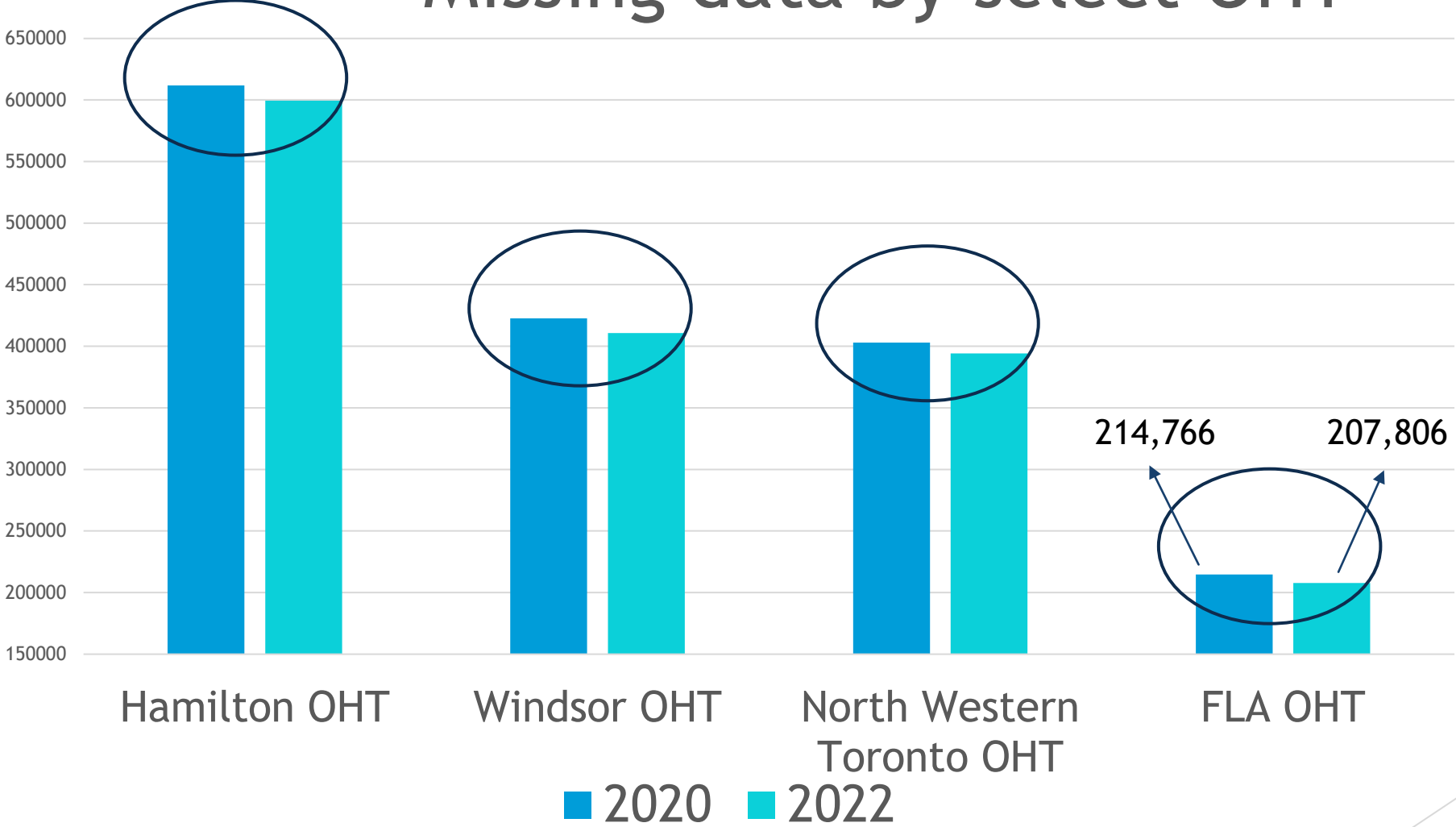
Primary Care Data Report-Data limitations

What this means...

OHT total attributed numbers declined due to the removal of people who:

- ▶ Have died
- ▶ No longer have OHIP numbers
- ▶ No longer meet inclusion criteria (e.g., maximum age, years since last OHIP billing).

Missing data by select OHT

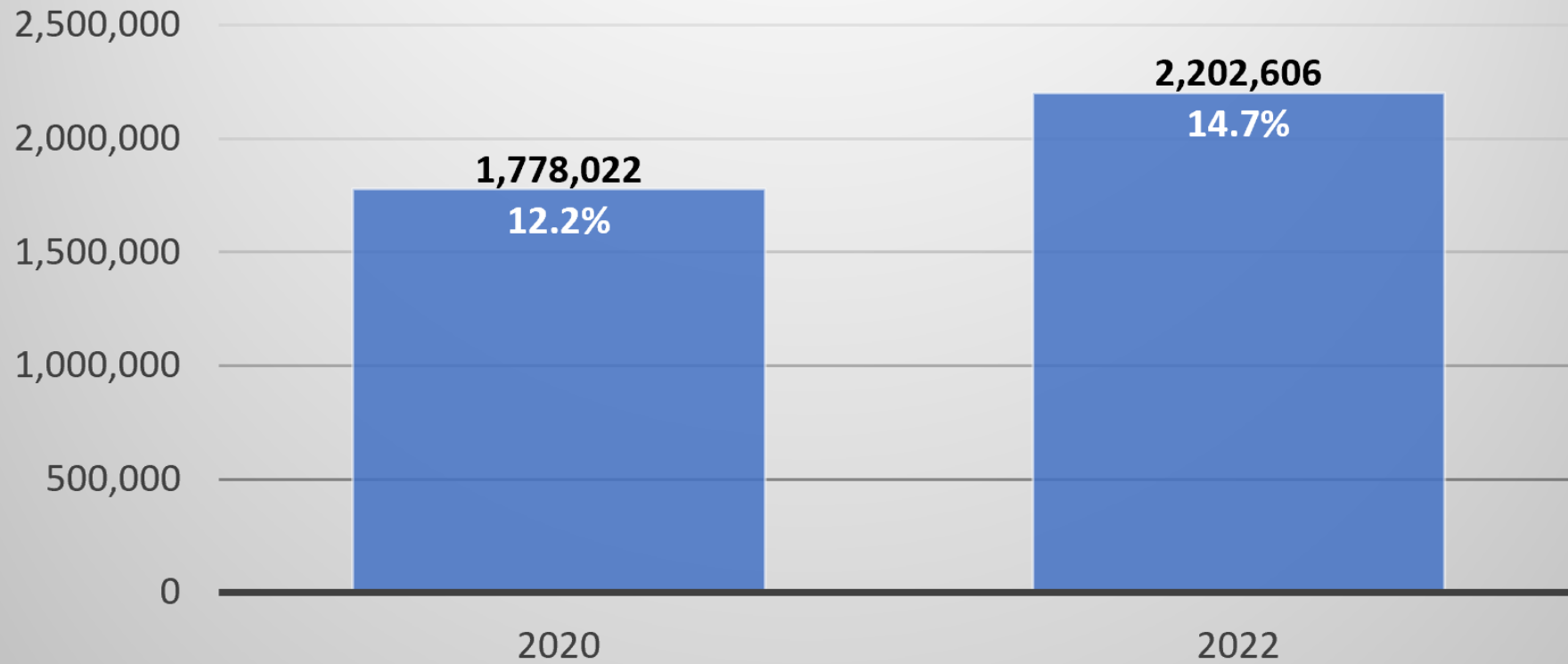


**2022 Primary Care
Data Reports
currently available**

More coming soon!

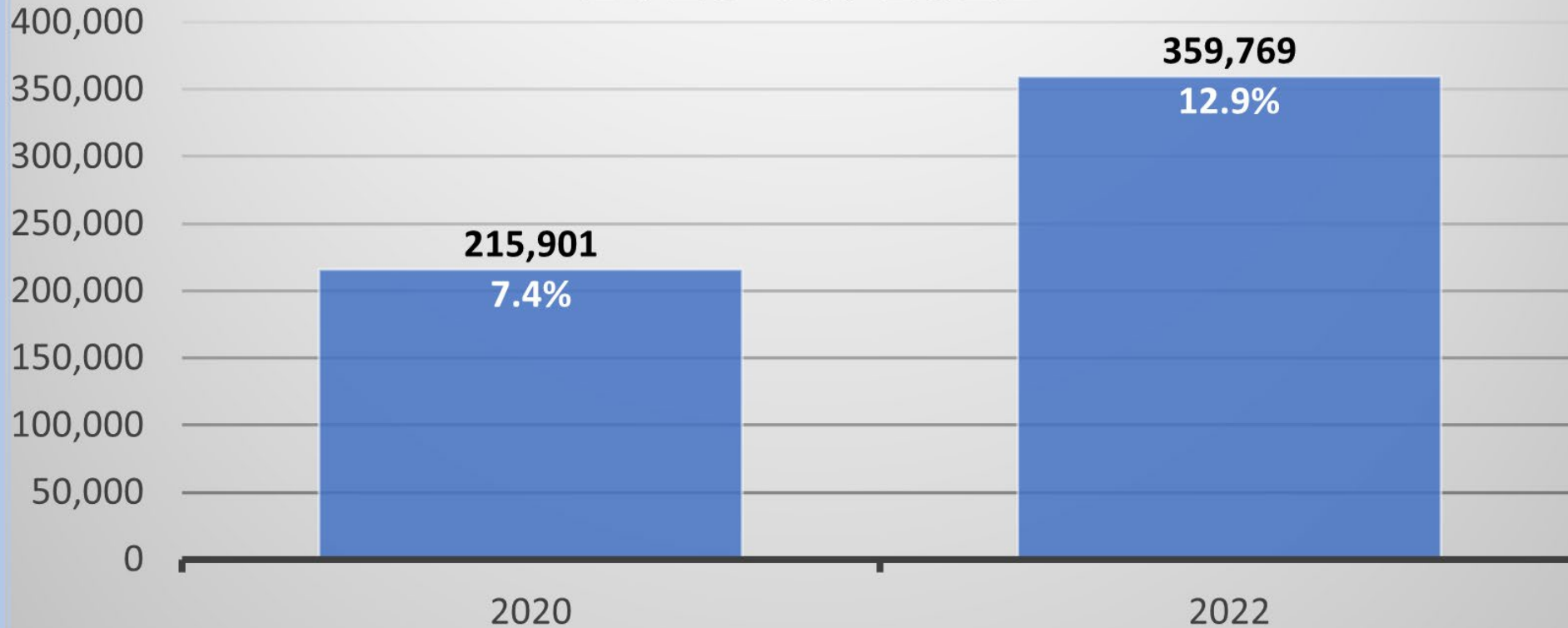
1003	Burlington OHT
1009	Downtown East Toronto OHT
1010	Durham OHT
1011	East Toronto Health Partners OHT
1014	Frontenac, Lennox and Addington OHT
1016	Greater Hamilton Health Network
1020	Lanark, Leeds and Grenville OHT
1021	Mid-West Toronto OHT
1022	Mississauga OHT
1026	North Toronto OHT
1027	North Western Toronto OHT
1028	North York Toronto Health Partners OHT
1034	Sarnia Lambton OHT
1035	Scarborough OHT
1038	West Toronto OHT
1039	Middlesex London OHT
1041	Central West OHT
1044	Elgin OHT
1046	Grey Bruce OHT
1051	Windsor Essex OHT

Ontarians without a regular source of primary care 2020 vs. 2022



Primary Care Data Reports, All Ontario - March 31, 2022

Paediatric patients without a regular source of primary care 2020 vs. 2022



Primary Care Data Reports, All Ontario - March 31, 2022



Paediatric data considerations

The increase in uncertainly attached paediatric patients may reflect a decrease in primary care utilization from March 31, 2020 to March 31, 2022:

- ▶ Periodic health exams (ex. virtually rostered 5-9 year olds) are not conducted for some age groups
- ▶ Lower levels of circulating respiratory and GI viruses

Primary Care Attachment Patterns by OHT

Uncertainly Attached and in No Team



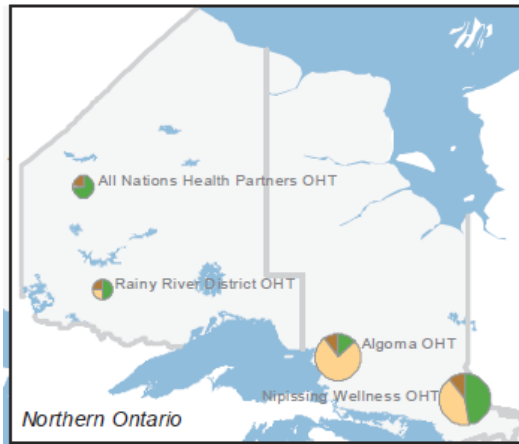
Team-Based Care
FHT and CHC

Attached and in No Team

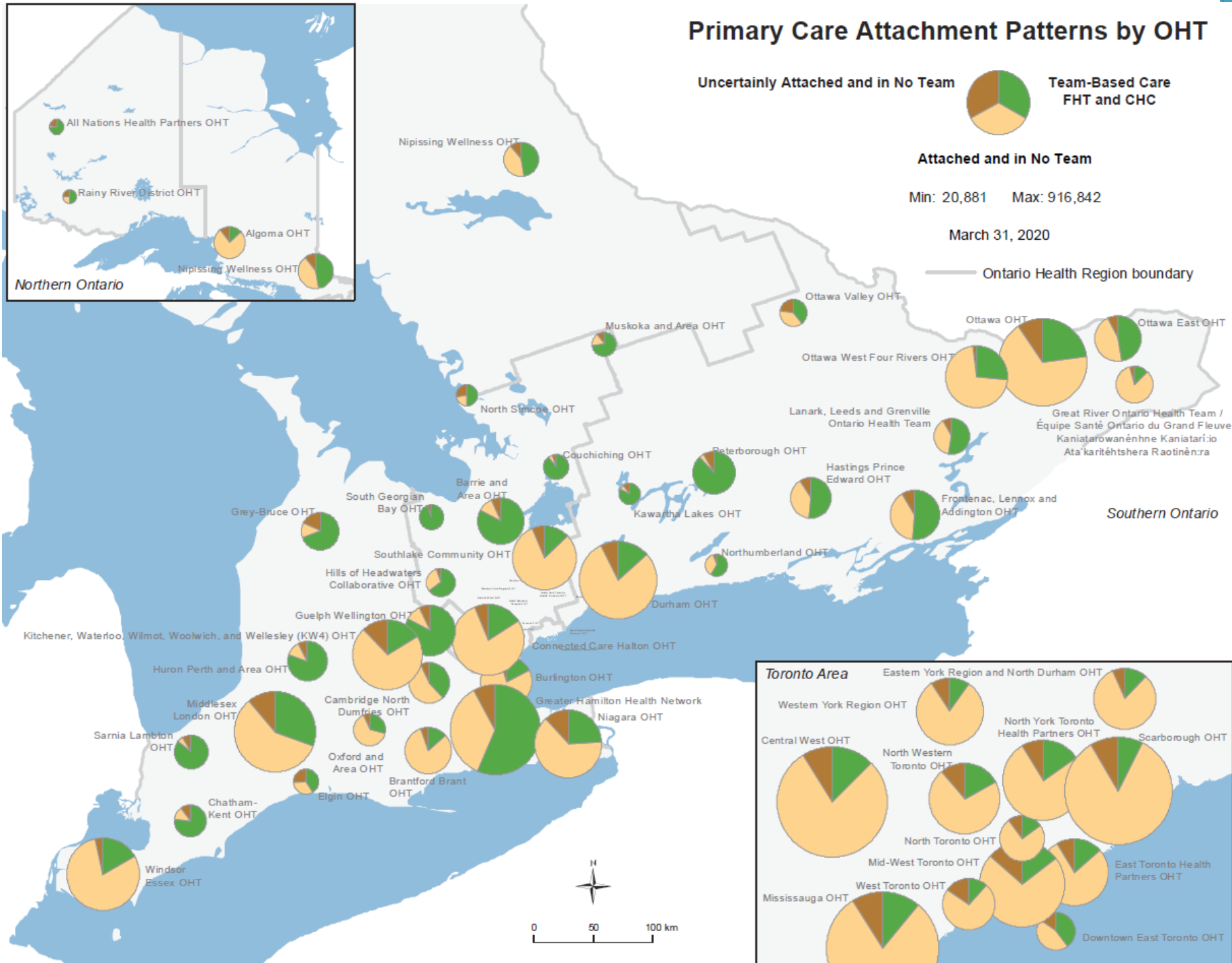
Min: 20,881 Max: 916,842

March 31, 2020

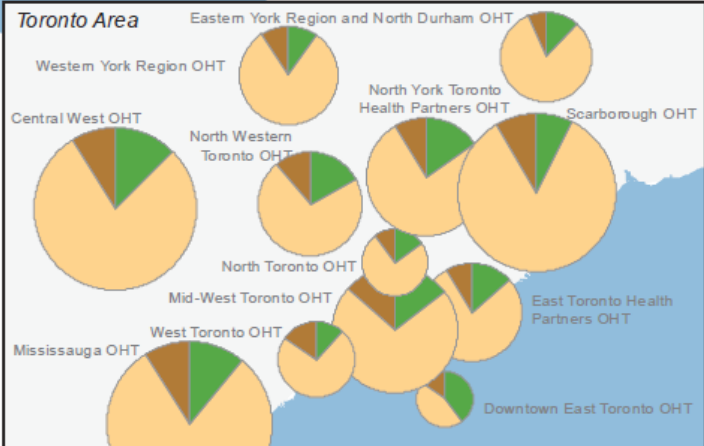
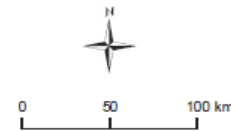
Ontario Health Region boundary



Northern Ontario

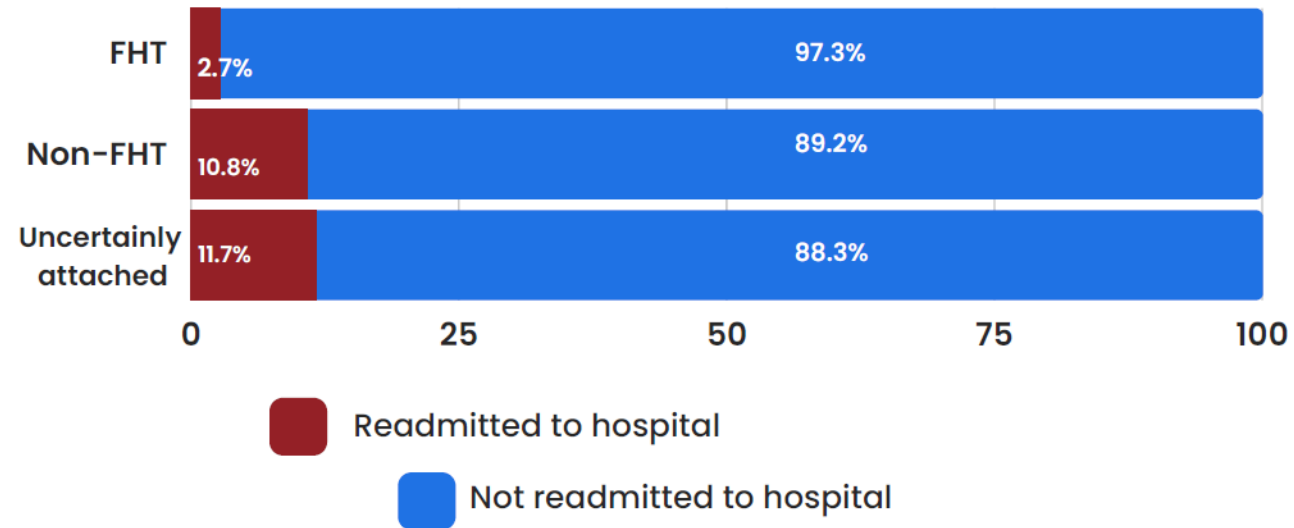


Southern Ontario



Toronto Area

Hospital readmission within 30 days of discharge by attachment status in Ontario, 2020



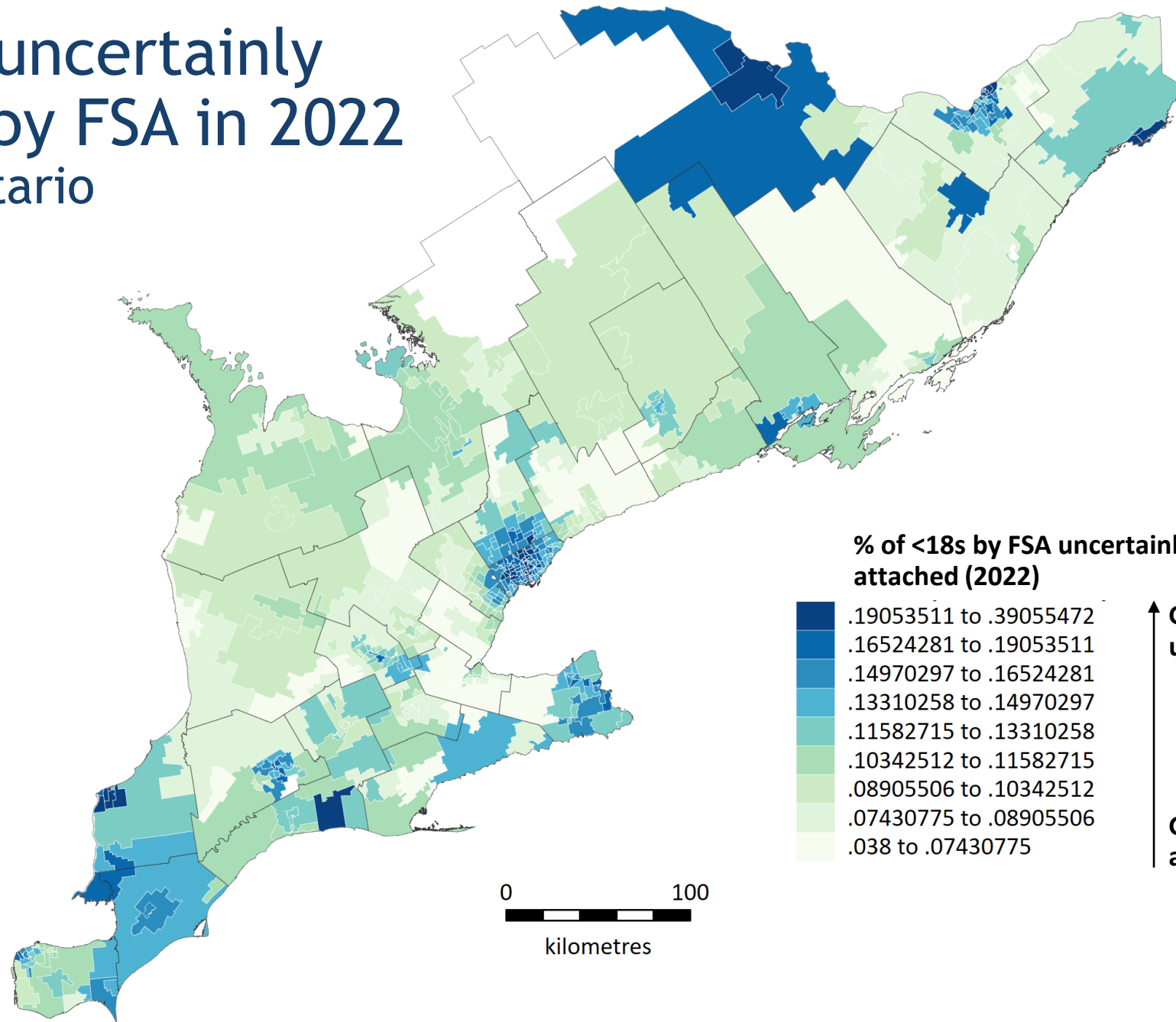
The percentage of people with hospital readmission within 30 days of discharge was lower among people attached to FHT than their counterparts.

NB: The denominators used to calculate each of the proportions was total population in each category

- ▶ [Slide compliments of:](#)
- ▶ www.team-ipc.ca

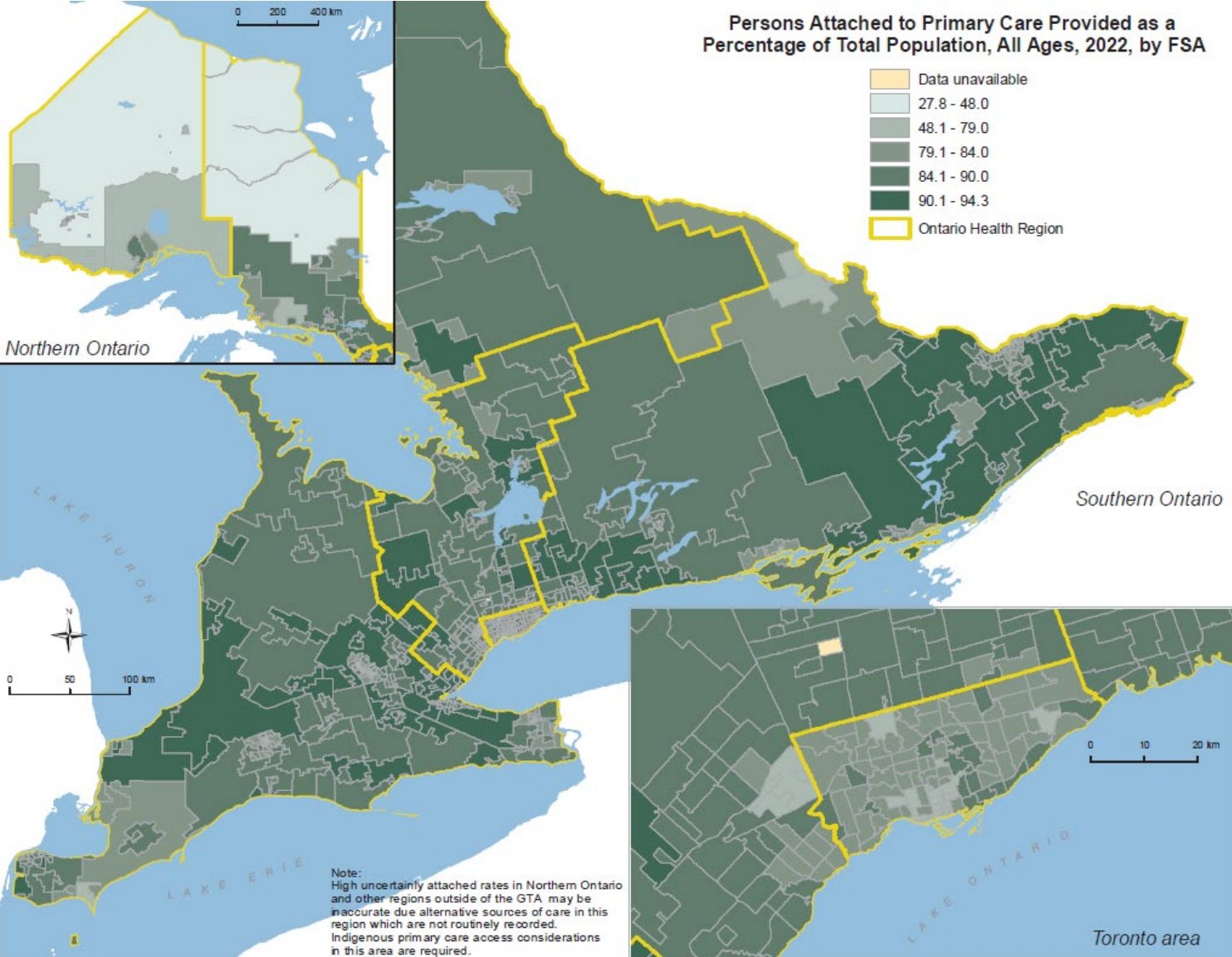
% of <18s uncertainly attached by FSA in 2022

Southern Ontario



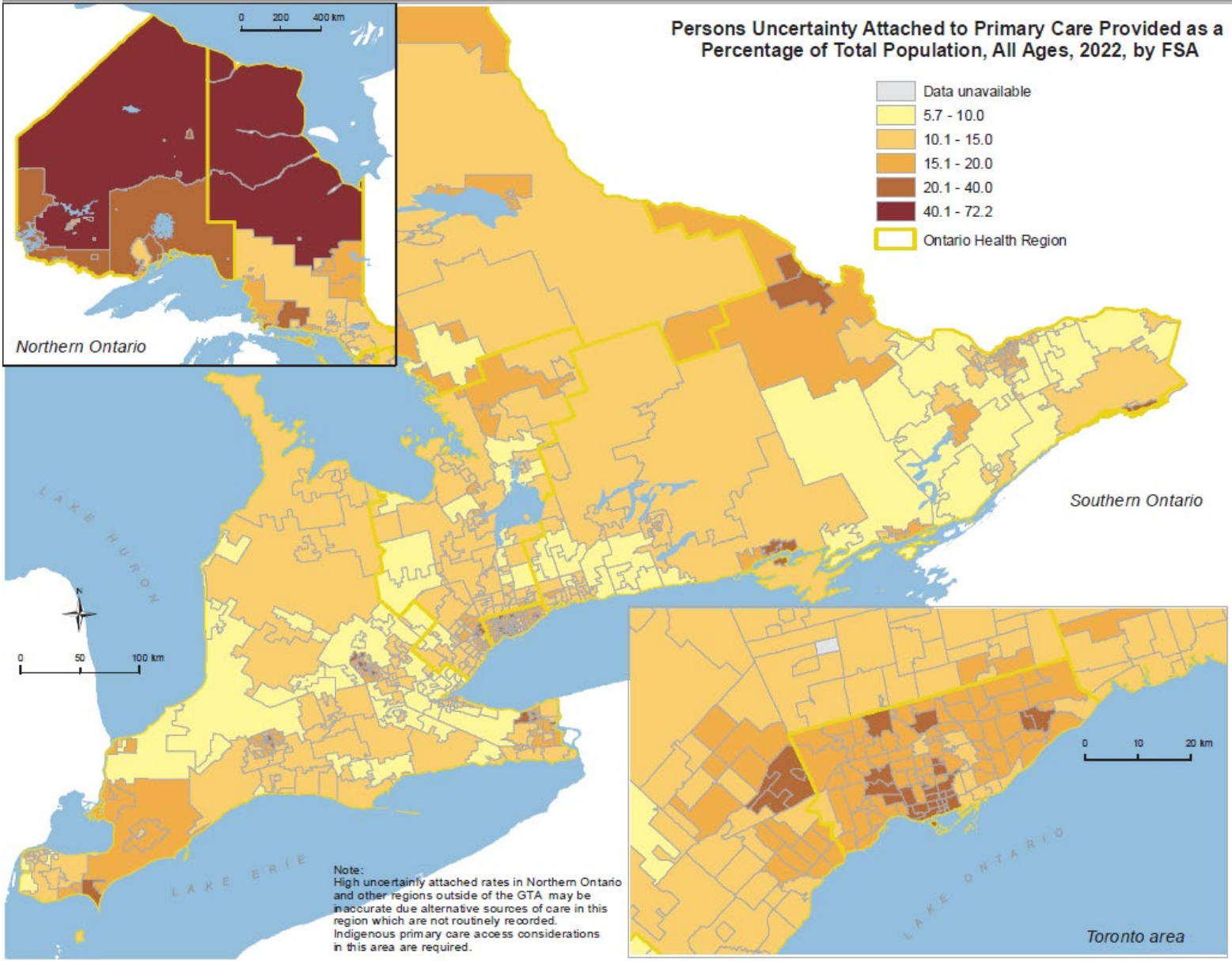
Attachment data provided by INSPIRE-PHC. Excludes FSAs with <50 kids

Attached to Primary Care -2022- by FSA



Attachment data provided by INSPIRE-PHC. Excludes FSAs with <50 kids

Uncertainly attached to primary Care-2022



Attachment data provided by INSPIRE-PHC. Excludes FSAs with <50 kids

A snap shot of FLA OHT

PRIMARY CARE BY THE NUMBERS

FRONTENAC, LENNOX & ADDINGTON

UNCERTAINLY ATTACHED PATIENTS

The number of people without a primary care provider in Frontenac, Lennox & Addington was 19,297 in 2022



NEW ONTARIANS

24% (1,846) of new arrivals to Ontario are in the FL&A region are uncertainly attached



LOW INCOME

30% (5,663) of uncertainly attached patients are in the lowest income quintile while 17% (3,187) are in the highest income quintile

MENTAL HEALTH

6% (2,719) of patients with a mental health diagnosis in the last 2 years are uncertainly attached



DIABETES

1,117 (5%) of uncertainly attached patients in FL&S are living with diabetes



WANT TO KNOW MORE?

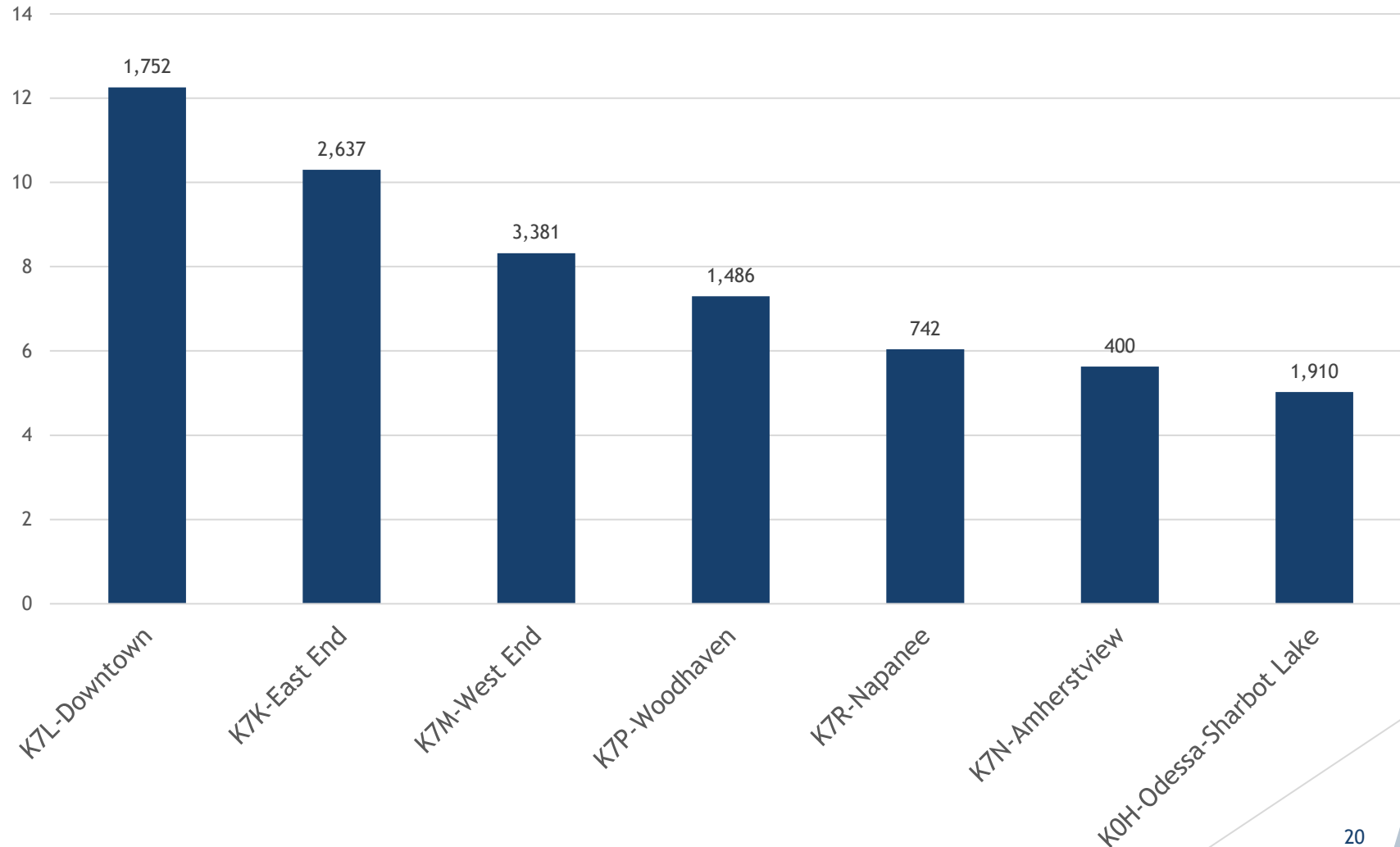
For more information, please visit:
<https://inspire-phc.org/primary-care-data-reports/>



INNOVATIONS STRENGTHENING PRIMARY HEALTH CARE THROUGH RESEARCH

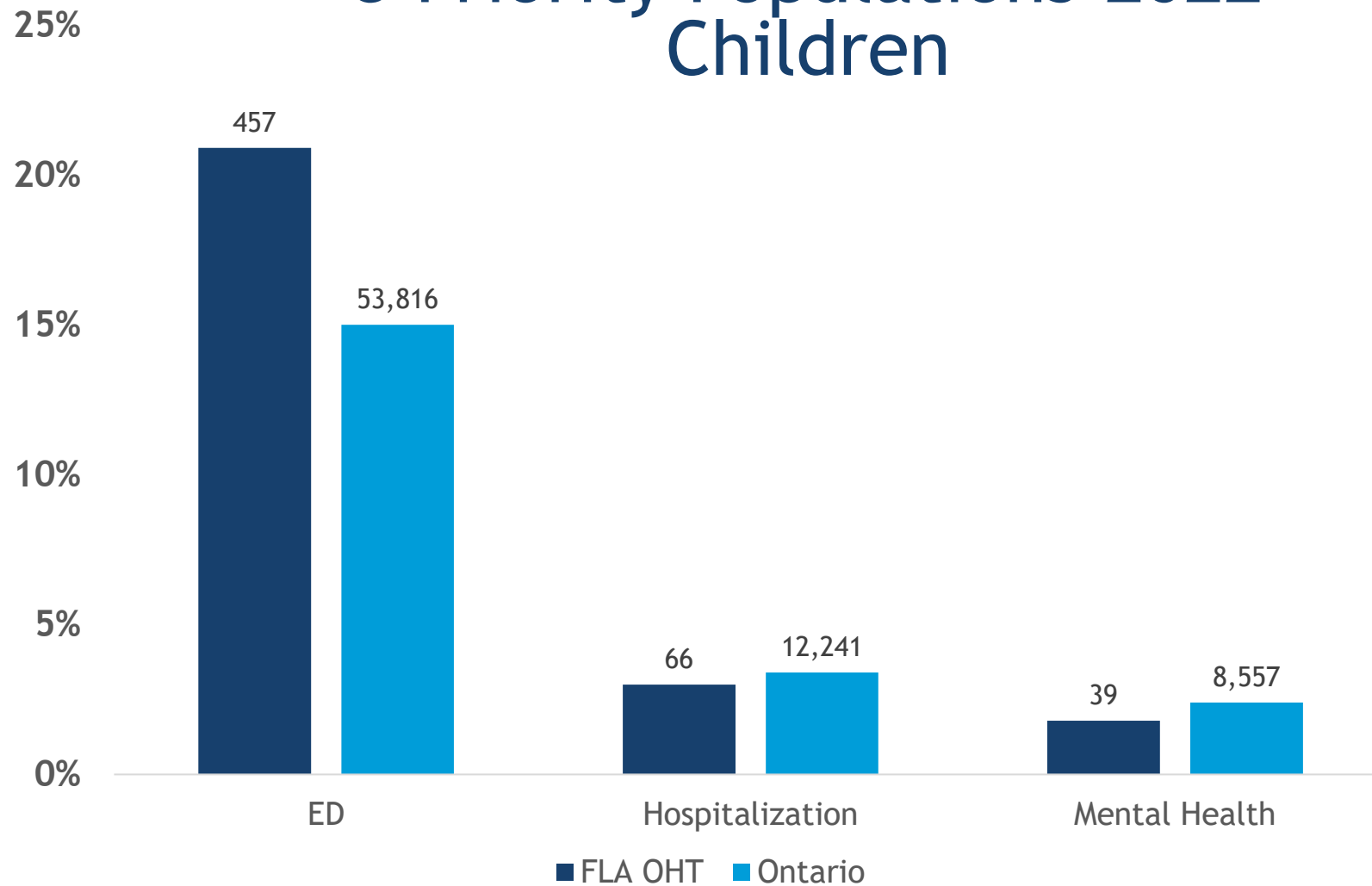
FSAs in FLA- 2022

% and N of Uncertainly Attached

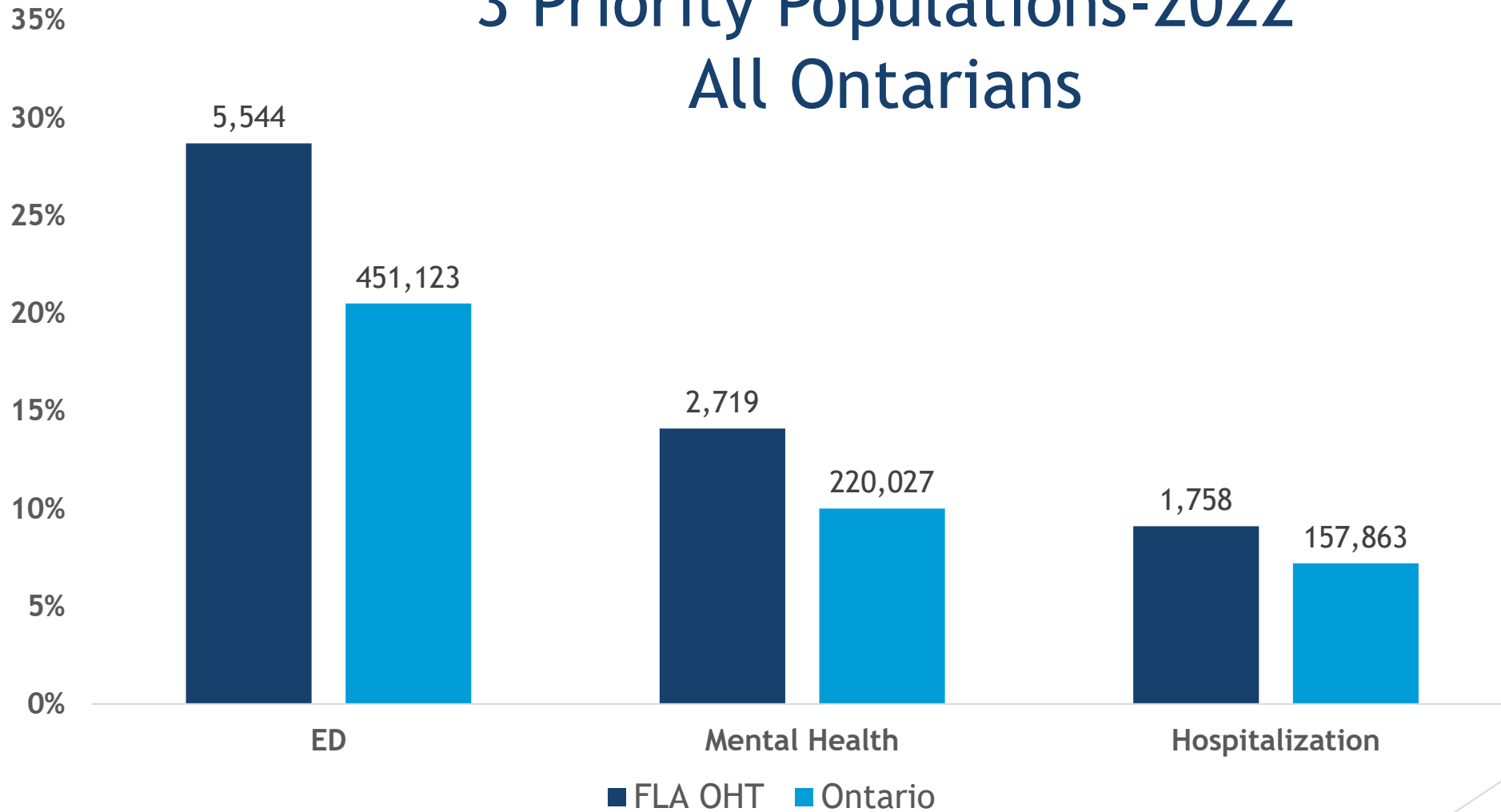


Graph updated to include only uncertainly attached patients attributed to FLA OHT

Uncertainly Attached and Health Care Utilization 3 Priority Populations-2022 Children



Uncertainly Attached and Health Care Utilization 3 Priority Populations-2022 All Ontarians



Key Messages

Attachment priorities

- ▶ 6,207 FLA OHT patients without regular source of primary care who actively sought primary care.
- ▶ Of this group, 3,323 patients sought primary care services 5 times or more in the prior 2 years.
- ▶ Prioritize this group for attachment - high users of health care resources and no regular source of care.
- ▶ Includes 2,403 patients with a mental health diagnosis in the prior 2 years.

Key Messages

Mental health

- ▶ Mental health patients without regular source of primary care are typically high users of the health care system.
- ▶ Prioritize patients who have mental health diagnoses but no regular source of primary care for attachment.
- ▶ 45,515 FLA OHT patients had a mental health diagnosis in the prior 2 year period. **2,719** of these patients have no regular source of primary care.

Good news

Patient Enrollment Models

- ▶ Team based care is high in FLA with 53% of patients in a Family Health Team/CHC as compared with the Ontario average of 28%

Non health care user – primary care

- ▶ Patients who do not use the health care system likely are not seeking to be attached to a primary care provider. 68% (13,090) of all patients who do not have a regular primary care provider in FLA OHT are non users of primary care.

Questions-comments...