

academic enrichment program GLOBAL HEALTH

2018 INFORMATION SESSION

SCHOOL OF MEDICINE

DEFINING GLOBAL HEALTH

- health issues that transcends national borders
- process of addressing these health issues through resource-sharing and partnerships to create sustainable changes
- focus is placed on promotion health equity through advocacy

REQUIREMENTS

- **SERVICE LEARNING**
- **OBSERVERSHIP**
- **PRE-DEPARTURE TRAINING**
- **POST-DEPARTURE DEBRIEF**
- **ONLINE MODULES**
- **EDUCATIONAL SESSIONS**
- **MENTORSHIP (OPTIONAL)**

- Students will provide a service to a Kingston organization that works with underserved populations
- Students must commit to work with the organization for at least two semesters

SERVICE-LEARNING REQUIREMENTS



- Submit a project proposal (email global.health@queensu.ca to request form)
- Reflection paper (500-word written reflection) approved by Global Health team that is submitted at the conclusion of the service-learning project

- Placements need to be in a low-resource setting in Canada or abroad
- Pre-clerkship students: complete 4-week GH observership
- Clerkship students: complete 3-week GH observership
- Students are responsible for organizing the logistics of their placement

OBSERVERSHIP REQUIREMENTS



- MEdTech Observership Form
- Placement Database Application
- Off-Campus Activity Safety Program (OCASP) Form
- Attend Pre-Departure Training
- Attend Post-Departure Debrief



THE REVISED PRE-DEPARTURE TRAINING CURRICULUM CONSISTS OF 3 MODULES

MODULE 1

Directed, independent learning module completed prior to the first in-class session

MODULE 2

Lecture seminar addressing the following topics: personal health, travel safety, language competencies, cultural humility, ethical considerations and medical tourism

MODULE 3

Case-based, simulation training (interactive)

2019 PRE-DEPARTURE TRAINING DATES

MODULE 2 **MARCH 18, 2019**

&

MODULE 3 **MARCH 25, 2019**



**BEGINS AT 5:30 IN THE SCHOOL OF MEDICINE
BRITTON SMITH LECTURE THEATRE | ROOM 132A**

THE DEBRIEF IS MANDATORY FOR ALL MEDICINE STUDENTS

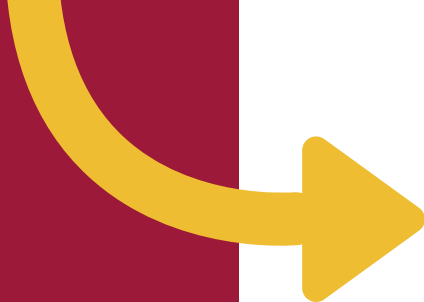
The purpose of this session is to debrief on: achievement of learning objectives, positive and negative experiences and lessons learned

DEBRIEF REQUIREMENTS



- attend the debrief session
- complete a post-reflection survey
- deliver a short presentation on your observership at debrief

EDUCATIONAL SESSIONS



Educational sessions can be lectures, panels, journal clubs, documentary screenings on pertinent global health issues

Eligible sessions will be posted on the global health event listing page. If you come across an event that you think will qualify email global.health@queensu.ca and wait for an approval/decline response

Please email global.health@queensu.ca once you've attended an event -- sometimes a volunteer will take attendance at the event and forward to us. You are also required to keep track of your own attendance

SESSION REQUIREMENTS



- attend 6 educational sessions



MODULES ARE ACCESSIBLE ON THE GLOBAL HEALTH EDTECH COMMUNITY

- Infant & Child Health
- Sexuality and Gender
- Hunger
- International Development
- Infectious Diseases
- Maternal Health
- Non-Communicable Diseases

MODULE REQUIREMENTS



- complete all online modules



THE MENTORSHIP COMPONENT IS OPTIONAL AND INTENDED TO BE A RESOURCE FOR STUDENTS.

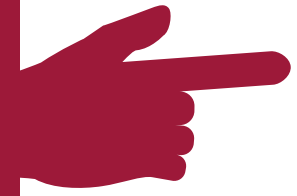
Please note that you do not have to select someone from this list. If you have a relationship with another global health physician you are most welcome to reach out to them. The current mentors are:

- Dr. Wendy Wobeser
- Dr. Jenn Carpenter
- Dr. Karen Yeates
- Dr. Geoff Hodgetts
- Dr. Eva Purkey
- Dr. Susan Bartels

MENTORSHIP REQUIREMENTS



- meet with a mentor at least once (e-mail global.health@queensu.ca when complete)
- reminder: this is optional



e-mail global.health@queensu.ca to register for the program

The global health enrichment program is self-directed. You have until the end of your undergraduate medical education at Queen's to complete the requirements.

It is, however, strongly recommended that you complete the program prior to clerkship.

**ALL QUEEN'S UGME STUDENTS IN GOOD
STANDING ARE ELIGIBLE TO REGISTER**



**IF YOU ENROLL IN THE GLOBAL HEALTH
ACADEMIC ENRICHMENT PROGRAM YOU
WILL BE E-MAILED A PROGRAM CHECKLIST
TO GUIDE YOU.**

QUESTIONS? CONTACT US!



GLOBAL.HEALTH@QUEENSU.CA

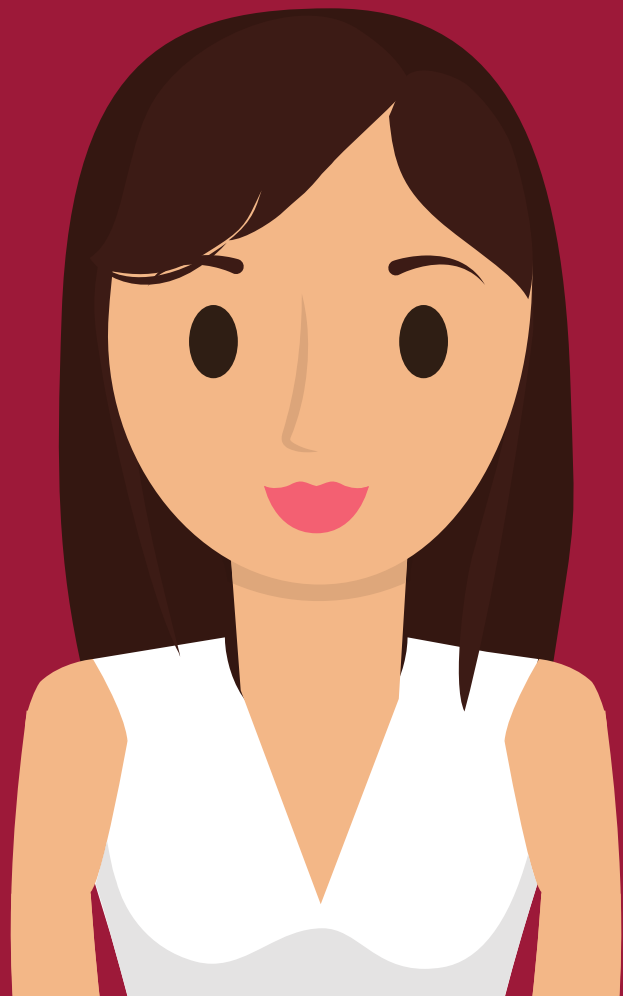


613.533.6000 X 75619



@QUEENSFHSGH

**THANK
YOU!**



**68 BARRIE STREET
ACROSS FROM CITY PARK
THIRD FLOOR, ROOM 25-300**