

Biochemistry Information Session

- Dr. Louise Winn, Associate Dean, Life Sciences and Biochemistry
Professor, Biomedical and Molecular Sciences & Environmental Studies
- Dr. Rob Campbell, Undergraduate Chair, Biochemistry
Assistant Professor, Biomedical and Molecular Sciences
- DSC Co-Presidents
 - Marietta Konermann and Aidan Booker

Wednesday November 3, 2021

Office of Life Sciences and Biochemistry

Location

- Rm. 815 Botterell Hall
 - biochem@queensu.ca
 - Candice Phillips & Beatriz Sugarman
- Use your Queen's email and leave your student #

Information for 2nd and 3rd year BCHM

SSP:

Recommended (but not necessary) if your career plans include research (i.e., graduate school) as there is a heavy emphasis on hands-on laboratory/research experience.
**Also meets the needs of most professional schools.

MAJ:

Recommended if your career plans are more inclined towards an emphasis on using your biomedical training to pursue a non-research career involving other professional training (medical, dental, business, law or other postgraduate school). The course requirements for the MAJ are designed for the needs of the non-research life sciences or biochemistry student; less core credits and more electives allows for the pursuit of additional electives which can thus be tailored to specific career need. **Also meets the needs of most professional schools.

SSP:

Recommended (but not necessary) if your career plans include research (i.e., graduate school) as there is a heavy emphasis on hands-on laboratory/research experience.
**Also meets the needs of most professional schools.

MAJ:

Recommended if your career plans are more inclined towards an emphasis on using your biomedical training to pursue a non-research career involving other professional training (medical, dental, business, law or other postgraduate school). The course requirements for the MAJ are designed for the needs of the non-research life sciences or biochemistry student; less core credits and more electives allows for the pursuit of additional electives which can thus be tailored to specific career need. **Also meets the needs of most professional schools.

Core Courses for BCHM (MAJ)

1 ST YEAR	2 ND YEAR	3 RD YEAR	4 TH YEAR
BIOL 102/3.0	BCHM 218/3.0	BCHM 313/3.0	BCHM 441/3.0
BIOL 103/3.0	CHEM 211/3.0	BCHM 315/3.0	6.0 units from:
CHEM 112/6.0	CHEM 212/3.0	BCHM 316/3.0	BCHM 410/3.0 or
PHYS 106/6.0 or	CHEM 222/3.0	BCHM 317/6.0	BCHM 411/3.0 or
PHYS 117/6.0 or	CHEM 223/3.0		BCHM 432/3.0
PHYS 104/6.0	BIOL 243/3.0		
MATH 120/6.0 or			
MATH 121/6.0 or			
MATH 122/6.0			

Core Courses for BCHM (SSP)



S
TY

1 ST YEAR	2 ND YEAR	3 RD YEAR	4 TH YEAR
BIOL 102/3.0	BCHM 218/3.0	BCHM 313/3.0	BCHM 410/3.0
BIOL 103/3.0	CHEM 211/3.0	BCHM 315/3.0	BCHM 411/3.0
CHEM 112/6.0	CHEM 212/3.0	BCHM 316/3.0	BCHM 421/6.0
PHYS 106/6.0 or	CHEM 222/3.0	BCHM 317/6.0	BCHM 422/6.0
PHYS 117/6.0 or	CHEM 223/3.0	Recommended 3.0 or 6.0 units at the 300 level with a laboratory component in any of ANAT, BIOL, BIOM, CHEM, LISC, PHAR or PHGY.	BCHM 432/3.0
PHYS 104/6.0	BIOL 243/3.0		BCHM 442/3.0
MATH 120/6.0 or			
MATH 121/6.0 or			
MATH 122/6.0			

Non-Arts and Sciences courses

- Only 6 units of non-Arts and Sciences courses can be used towards your degree
 - I.e. LAW, Commerce courses
- Exception – can take BMED courses
- Certificates – need to take extra credits

Combined BSc/MSc

- Biochemistry offer a combined program
- “Accelerated” path to graduate school
- Apply in the 2nd term of 3rd year
- Take up to 6 units of graduate courses during 4th year
- Continue 4th year research project

Exit Strategy

If you get an acceptance to medical school in your 3rd year...

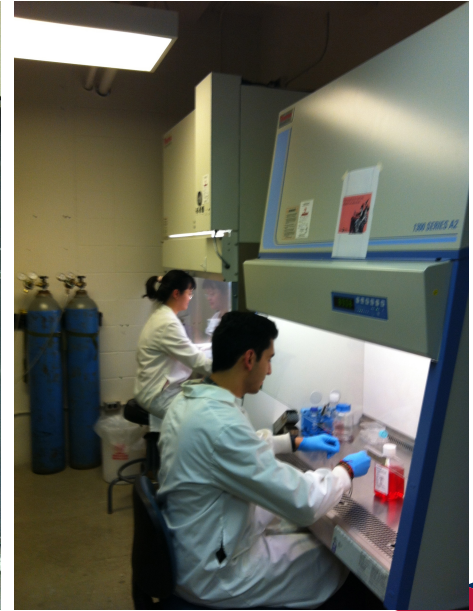
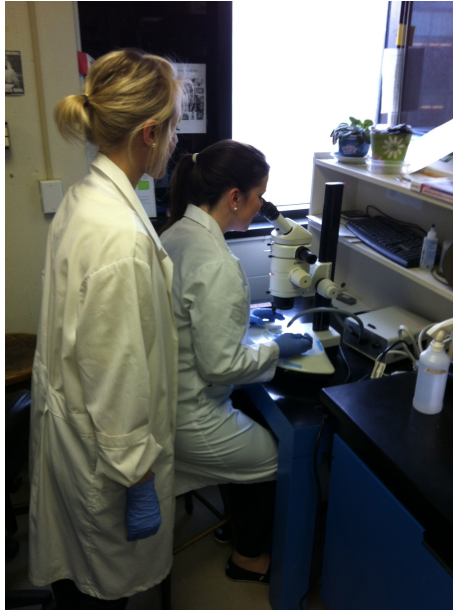
Life Sciences & Biochemistry –
General Bachelor of Science

Honours routes: Major or
Specialization

Health Sciences– General Bachelor
of Health Sciences

Honours route: Major

Research In Action



STUDENTS

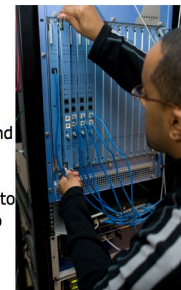
- ▶ Looking for a Job?
- ▶ Wondering about Career Options?
- ▶ Thinking about Grad School?
- ▶ Want to Build Experience?
- ▶ Tipsheets & Career Resources
- ▼ Services for Students
 - Graduate and Professional Students
 - ▼ Employment Programs
 - M.Eng. Industrial Internship Program
 - **QUIP**
 - SWEP
 - Work Study Program
 - Drop-in Career Advising
 - Events, Fairs, & Information Sessions
 - Career Advising & Resource Area
 - ▶ Workshops
 - ▶ Appointments
 - It All Adds Up
 - LinkedIn at Queen's

Queen's Undergraduate Internship Program (QUIP)

The Queen's Undergraduate Internship Program (QUIP) provides students with a 12-16 month work experience. QUIP internships are paid, professionally supervised, career-related positions designed to offer second or third year students the opportunity to learn about current advances, practices and technologies in business and industry. The program is open to students in the Faculty of Engineering and Applied Science (domestic and international), Faculty of Arts and Science (domestic and international), School of Computing (domestic and international) and the School of Business (domestic only; not for credit). Due to the longer work term (compared to a 4-month co-op), employers are highly motivated to maximize their time and investment. This means that Internship students are offered the opportunity to manage more extensive and significant projects.

[Search QUIP job postings](#)

[Contact QUIP coordinator](#)



Got Questions? Come and see the QUIP Coordinator during QUIP Drop-in Advising Hour – no appointment necessary!

QUIP Drop-in Advising: Every Tuesday and Thursday from 11-12 in the [Career Advising and Resources Area](#) (Sept-April)

— Eligibility

The program is open to students in the Faculty of Engineering and Applied Science (domestic and international), Faculty of Arts and Science (domestic and international), School of Computing (domestic and international) and the School of Business (domestic only - please see an academic advisor in the School of Business before registering).

- Queen's students can participate in QUIP after their 2nd or 3rd year of studies and must be returning to complete their final academic term after the internship.
- Students must have a minimum GPA of 1.9 and the permission of your undergraduate chair to register in QUIP.

Career Opportunities

Medicine

**Biomedical
Research**

Law

**Healthcare Policy and/or
Administration**

Industry

Pharmacy

Veterinary Medicine

Education

**Physiotherapy and
Occupational Therapy**

Dentistry

DSC Representatives

Stay connected with our BCHM DSC on social media!

Instagram: @bchmqueensu

Facebook: Queen's University Biochemistry