

TABLE OF CONTENTS

Table of Contents.....	ii
Mandate.....	1
Objectives	1
Strategic Priorities.....	2
Message from the Director.....	3
Core Faculty Profiles	4
Visiting Faculty Profiles.....	7
Special Events	8
Research Projects.....	12
Primary Health Care Delivery.....	12
Supporting Canada’s Vulnerable Populations	16
Capacity Building in Health Services	21
Teaching and Supervision	24
CHSPR Personnel.....	27
Advisory Council.....	31
Financial Statements.....	32

MANDATE

Set within a Faculty of Health Sciences and working in partnership with other academic institutions, government, and the private sector, the Centre for Health Services and Policy Research (CHSPR) at Queen's University aspires to international recognition as an interdisciplinary research and teaching unit. It is dedicated to the production and dissemination of applied and theoretical knowledge on both health services and policy.

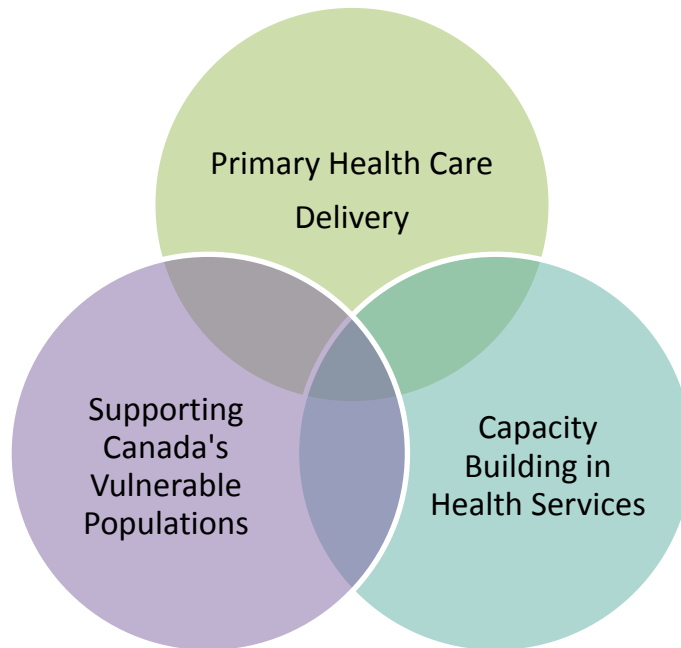
OBJECTIVES

- To create a visible, viable, and productive research organization;
- To achieve a high level and quality of scholarly output;
- To enhance capacity in the field;
- To work with decision makers to achieve robust policy solutions;
- To integrate health services and policy research into the activities of the Faculty of Health Sciences and the wider University community; and
- To create productive collaborations with researchers elsewhere in Canada and abroad.



Queen's University Coat of Arms:
"Wisdom and knowledge shall be the stability of thy times."

STRATEGIC PRIORITIES



CHSPR investigators are engaged in a range of research projects which reflect current priorities of Ontario's health care system, including:

- Primary Care
- Aboriginal Health
- Disability Policy
- Delivery of Care for People with Disabilities
- Mental Health Services Research
- Chronic Disease Management
- Population Health

By design, its research programs promote collaboration between CHSPR and other research units at Queen's and across the country. An integrated knowledge transfer approach routinely relies on engaging key decision makers at all stages of a program of research, and is the hallmark of a CHSPR project.

MESSAGE FROM THE DIRECTOR



Welcome to our annual report for 2015/16. As you will see, the centre continues to be very active in research in policy relevant areas such as care of vulnerable populations (mental health, aboriginal health, disability policy). This year saw us exploring new opportunities in international collaborations with New Zealand and we were thrilled to have Dr. Tim Tenbensen from Auckland join us for the fall. We look forward to welcoming more visitors in the year ahead.

It is a great feeling to be a part of such a dynamic team that is tackling important policy relevant issues through research. I hope you enjoy the report and look forward to leading the centre as it evolves and becomes a part of the proposed new Queen's Health Services and Policy Research Institute.

Michael Green, MD, MPH, CCFP
Director

CORE FACULTY PROFILES

MICHAEL GREEN, MD, MPH, CCFP

DIRECTOR



CHSPR Director Dr. Green continues to use the Clinical Teachers' Association of Queen's (CTAQ) Chair in Applied Health Economics / Health Policy funds from to support the centre and in particular to support the development of new projects, engaging other clinical teachers in his area of research, and expanding the international collaborations of the Centre.

Dr. Tim Tenbenschel, Head of the Health Systems Section, School of Population Health, at the University of Auckland spent the fall of 2016 working on a project evaluating Health Links in

South Eastern Ontario. Dr. Green subsequently attended the Health Services Association of Australia and New Zealand research meeting in Melbourne in Dec 2016, where his abstract was awarded "highly commended" status and linkages with the chair of the scientific committee were made to facilitate a visit to CHSPR at a later date.

In 2015, he received \$770,000 IMPACT Award from the Ontario SPOR Support Unit for a three-year project entitled: "Reducing the Burden of Diabetes on First Nations People in Ontario: Using Population Level Data to Inform Policy and Practice." He continues his active roles in the FORGE-AHEAD project on diabetes care in First Nations communities (CIHR Community Based Primary Care Team Grant) and INSPIRE-PHC program of primary care research (MoHTLC - Health Systems Research Fund).

Dr. Green was featured in Faces of Healthcare on healthydebate.ca in June, 2016. The interview was conducted by Health Quality Ontario's Dr. Andreas Laupacis, and highlights his experiences as a clinician-researcher. Full article available at: <http://healthydebate.ca/faces-health-care/applied-health-research>



MARY ANN MCCOLL, PHD, MTS
ASSOCIATE DIRECTOR

Dr. Mary Ann McColl is Associate Director of the Centre for Health Services and Policy Research, and Professor in the School of Rehabilitation Therapy, with a cross-appointment in the Department of Public Health Sciences. She is also the Academic Lead for the Canadian Disability Policy Alliance – an association of academic, community and policy partners committed to understanding and enhancing disability policy in Canada. Dr. McColl’s research interests include – Disability policy in Canada; Access to health services for people with disabilities; Rehabilitation in health care.



ANA JOHNSON, PHD, MEd

Dr. Ana Johnson headed the ICES Queen’s Health Services Research Facility from 2007 – July 2016. She is currently researching treatment for bleeding often caused by new medication given to the elderly suffering from atrial fibrillation. She is examining elderly patients who are on these drugs and are hospitalized with bleeding to determine the course of treatment, the costs associated with that treatment and patient outcomes.



LINDA LÉVESQUE, PHD, MSc

Dr. Linda Lévesque was Principal Investigator on a \$382,065 grant awarded by CIHR to study the impact of the HPV vaccine on adolescent health outcomes. Dr. Levesque’s study aimed to address critical questions to help young girls and their parents make more informed decisions about HPV vaccination. She and her graduate student, Leah Smith (PhD awarded), appeared in the media over the last year regarding their research into the effect of HPV vaccination on clinical indicators of sexual behaviours among adolescent girls. Dr. Lévesques primary appointment at Queen’s ended Dec 31 2015.



HEATHER STUART, PHD, MA

Dr. Stuart was named the inaugural Bell Mental Health and Anti-Stigma Research Chair in 2012. She has also been prominently featured in the Queen's Initiative Campaign for her important work. She also continues in her role as an advisor to the Mental Health Commission of Canada, and is currently involved (with Co-PIs Terry Krupa and Shu-Ping Chen) in wrapping up a \$1.7 million grant from Movember Canada: "The Caring Campus: An Intervention Project." The multi-institutional project focuses on substance abuse, reducing the stigma associated with substance misuse and creating a more caring campus. "We want to help first-year male students manage their basic health," says Dr. Stuart.



CHRISTINE KNOTT, PHD

INTERDISCIPLINARY FELLOW

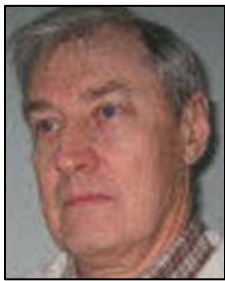
Dr. Christine Knott is an Interdisciplinary Fellow, funded by Technology Evaluation in the Elderly, Network Centre of Excellence of Canada. Dr. Knott's research program involves studying access and utilization of health services by the elderly. She is especially focused of the elderly that are frail, coping with multiple chronic-comorbidities or advanced illness or who may require palliative and end-of-life care. Currently, she is co-principal investigator for two current studies that look at: the impact of community-based rehabilitation on rehospitalization; and the prescribing and utilizing medications and supplies in the home for alleviating symptoms, crisis prevention and early crisis management associated with advanced illness and dying.

VISITING FACULTY PROFILES



TIM TENBENSEL, PHD
UNIVERSITY OF AUCKLAND, NEW ZEALAND

Dr. Tim TenbenseL, Head, Health Systems Section, School of Population Health, University of Auckland, New Zealand, will be visiting Queen's next week. Dr. TenbenseL teaches and researches health policy. His research interests encompass health policy, health systems, comparative health policy, policy processes and public sector management. His major research focus for the past ten years has been the implementation of health policy initiatives in New Zealand.



CLARKE WILSON, PHD
SCHOOL OF POLICY STUDIES, QUEEN'S UNIVERSITY

Dr. Clarke Wilson is a Visiting Researcher at CHSPR. He has degrees in Economics and Urban Planning from Queen's, and a doctorate in Architecture from Cambridge University. Recently retired from Canada Mortgage and Housing Corporation, he is an Adjunct Professor in the School of Urban and Regional Planning. In collaboration with Dr. Mary Ann McColl, Dr. Wilson is examining Statistics Canada time use survey databases to compare the daily time use patterns and activity sequences of disabled and non-disabled Canadians.

SPECIAL EVENTS

ANNUAL BELL LET'S TALK DAY (JANUARY 27, 2016)



A 2015 Nielsen survey undertaken on behalf of Bell Let's Talk found that 81% of Canadians were more aware of mental health issues than in 2010 (87% of youth aged 18 to 24), 70% think attitudes about mental health have changed for the better (79% of young people), and 57% believe the stigma around mental illness has been reduced (65% of young people).

Five simple ways to help fight the stigma around mental illness

Developed by Dr. Heather Stuart, these five ways to communicate about mental illness show your support and can help those who struggle overcome their concerns about seeking help:

1. Language matters – pay attention to the words you use about mental illness
2. Educate yourself – learn, know and talk more, understand the signs
3. Be kind – small acts of kindness speak a lot
4. Listen and ask – sometimes it's best to just listen
5. Talk about it – start a dialogue, break the silence

CHAMPIONS OF MENTAL HEALTH AWARDS (MAY 3, 2016)



The Canadian Alliance on Mental Illness and Mental Health (CAMIMH) hosted its annual reception and awards ceremony in Ottawa. Dr. Heather Stuart received the Researcher/Clinician Award in recognition of her work around reducing stigma experienced by people with mental illness.

2016 CAHSPR CONFERENCE (MAY 10-12, 2016)

A LEARNING HEALTHCARE SYSTEM: LET THE PATIENT REVOLUTION BEGIN!



CHSPR research was well-represented at the 2016 CAHSPR Conference, featuring the following presentations:

1. A Population Based Analysis of the Impact of a Provincial Quality Improvement Program on Primary Health Care in Ontario. **Green ME**, Harris S, Webster Bogaert S, Birtwhistle R, Kopp A, Ho M, Kotecha J, Glazier R.
2. Can 12 primary health care (PHC) research teams with different objectives and methodologies join forces to collect data that supports the production and measurement of common PHC measures? Wong S, Katz A, Ploeg J, Haggerty J, Liddy C, Grunfeld E, Harris S, **Green ME**, Fortin M, Dolovich L, Wodchis W.
3. Changing proportion of adults with and without intellectual and developmental disabilities (IDD) receiving an annual health exam from 2003 to 2015 in Ontario, Canada. **Smith G**, **Green ME**, Ouellette-Kuntz H.
4. Older community-dwelling home care clients receiving rehabilitation: Wait times and the impact on hospital utilization. **Knott TC**, **McColl MA**, **Green ME**.

BELL LET'S TALK ANNUAL LECTURE, BREAKING THE SILENCE (MAY 31, 2016)



Shea Emry, Heather Stuart, Tamara Taggart, Mary Deacon (Photo by Rick Etkin)

Dr. Heather Stuart delivered the keynote address at the 4th Annual Bell Let's Talk Lecture, Breaking the Silence. The event was held at the Simon Fraser University Goldcorp Centre for the Arts in Vancouver, and was attended by over 150 people. Other notable guest speakers included: CTV Vancouver's Tamara Taggart, and former Canadian Football League linebacker and two-time Grey Cup champion Shea Emry.

"Bell Let's Talk is very pleased to work closely with Queen's University to support anti-stigma research and mental health awareness, including funding the world's first chair in anti-stigma research. The annual Breaking the Silence lecture helps broaden the discussion around ending the stigma of mental illness, which remains the biggest barrier for people seeking help."

Mary Deacon, Chair, Bell Let's Talk



QUEEN'S HEALTH POLICY CHANGE CONFERENCE SERIES (JUNE 7-8, 2016)

The series is a collaborative effort between three globally-recognized research brands – Queen's University's Faculty of Health Sciences, School of Policy Studies, and The Monieson Centre for Business Research in Healthcare at Queen's School of Business.

The third in the Queen's Health Policy Change Conference Series, *Transforming Canadian Healthcare Through Innovation*, brought together over 100 leaders and decision-makers to discuss how government, industry, healthcare providers, and academia can collaborate to drive innovation and optimize the impact of technology, data, and new treatments on the health of Canadians. Speakers affiliated with the Centre included: CTAQ Chair in Applied Health Economics/ Health Policy and CHSPR Director Dr. Michael Green, President of the Canadian Medical Association Dr. Chris Simpson, and Professor of Emergency Medicine and Policy Studies Dr. David Walker.

Queen's Health Policy Change CONFERENCE SERIES

QUEEN'S HEALTH POLICY INTEREST GROUP SPEAKER SERIES (ONGOING)

This series is funded by the CTAQ Chair in Health Economics/ Health Policy, and co-chaired by students Henry Ajzenberg and Elina Liu (Meds '18). The series has been very successful, featuring speakers such as:

- Former Canadian Senator and Member of the Order of Canada, Queen's Department of Family Medicine's Dr. Ruth Wilson
- President of the Canadian Medical Association and Queen's Chief of Cardiology Dr. Chris Simpson
- CTAQ Chair in Health Economics/ Health Policy and CHSPR Director, Dr. Michael Green
- Palliative Care and Family Physician at William Osler Health System and the Inner City Health Associates, Dr. Naheed Dosani

RESEARCH PROJECTS

PRIMARY HEALTH CARE DELIVERY

PROJECT	INVESTIGATORS	FUNDING DETAILS	DURATION
Primary Health Care Program	Stewart M, Bhattacharyya O, Dahrouge S, Dolovich L, Glazier RH, Green ME , Hogg W, Liddy C, Phillips S, Regan S, Terry A, Zwarenstein M	\$3,720,000 MOHLTC Health Systems Research Fund	Apr 2013 – Mar 2016
Transformation of Indigenous Primary Healthcare Delivery (FORGE AHEAD): Community-driven Innovations and Strategic Scale-up Toolkits	Harris S, Barre D, Bhattacharyya O, Dannenbaum D, Dawson K, Dyck R, Episkenew J, Green ME , Hanley A, Lavallee B, Macaulay M, McComber A, Parry M, Reichert S, Salsberg J, Thind A, Tobe S, Toth E, Walsh A, Wortman J, Zwarenstein M, et al.	\$2,500,000 CIHR Community-Based Primary Health Care Team Grant	Apr 2013 – Mar 2018
Reducing the Burden of Diabetes on First Nations people in Ontario: using population level data to inform policy and practice	Green ME (PI), Walker J, Jacklin K, Shah B, Jones C, and Moineddin R.	\$770,000 Ontario SPOR Support Unit IMPACT Award	June 2015 – June 2018
Transformation of Indigenous Primary Healthcare Delivery (FORGE AHEAD): Community-driven Innovations and Strategic Scale-up Toolkits.	Harris S, Barre D, Bhattacharyya O, Dannenbaum D, Dawson K, Dyck R, Episkenew J, Green ME , Hanley A, Lavallee B, Macaulay M, McComber A, Parry M, Reichert S, Salsberg J, Thind A, Tobe S, Toth E, Walsh A, Wortman J, Zwarenstein M, et al.	\$200,000 Lawson Foundation	Sept 2014 – Mar 2018
A Comparative Analysis of Centralized Waiting Lists for Unattached and Complex Patients Implemented in Six Canadian Provinces.	Breton M(PI), Green ME (Co-PI), Jobu J, Kreinder S, Sutherland J, Marnett M, Brouselle A, Contandriopoulos D, Crooks V, Dube F, Dulude S, Shaw J, Tunbull M and Wong S. CIHR SPOR PIHCN Quickstrike Award. March 2016-March 2017. \$98,110.	\$98,110 CIHR SPOR PIHCN Quickstrike Award	Mar 2016 – March 2017
Infoway Remote Patient Monitoring Program Benefits Evaluation.	Carson S, Broman K, Green ME .	\$72,276 Wellington Waterloo Futures Development Corporation.	Jan 2015 – Oct 2016

PROJECT	INVESTIGATORS	FUNDING DETAILS	DURATION
Linking Canadian Primary Care Sentinel Surveillance System (CPCSSN) data with administrative data from ICES for complex patients to better understand utilization patterns and care requirements	Birtwhistle R(PI), Williamson T, Green ME , Darouge S, Glazier R, Greiver M, Barber D, and Terry A.	\$48,048 Applied Health Research Question: INSPIRE-PHC Subgrant	Mar 2014 – Mar 2015
Reducing the Burden of Diabetes on First Nations people in Ontario: using population level data to inform policy and practice	Green ME (PI), Walker J, Jacklin K, Shah B, Jones C, and Moineddin R.	\$17,000 Ontario SPOR Support Unit IMPACT Award Development Grant	Mar 2015 – May 2015
Validity of CPCSSN'S Depression Diagnostic Algorithm Incorporating Patient Reports.	Green ME (PI), Savage C, Birtwhistle R, Stuart H, Bowring E and Barber D. CSPC/Dept of Family Medicine Internal Seed Funding Competition. Nov 2014- Dec 2015. \$16,000.	\$16,000 CSPC/Dept of Family Medicine Internal Seed Funding Competition	Nov 2014 – Dec 2015

PRIMARY HEALTH CARE DELIVERY

Peer-Reviewed Articles

* Denotes a Student Author

Birtwhistle RV, Morkem R, Peat G, Williamson T, **Green ME**, Khan S and Jordan K. Osteoarthritis in Family Physician Practices in Canada: A Report of the Canadian Primary Care Sentinel Surveillance Network (CPCSSN). *CMAJ Open*, 2015; **3**(3): E270-275. DOI: 10.9778/cmajo.20150018. Summary published in Print Edition of *CMAJ*.

Gray D, Hogg W, Zhang Y and **Green ME**. Did Family Physicians Who Opted Into a New Payment Model Earn More? Experimental Evidence from Ontario. *Canadian Public Policy* 2015; 41(2):151-165.

Gray D, Hogg W, **Green ME**, Zhang Y. « Êtes-vous dans une meilleure situation économique qu'il y a quatre ans? Examen de la perception du revenu des médecins de famille en Ontario » (in French) *L'Actualité économique, Revue d'analyse économique*, 91, 3, septembre 2015.

Green ME, Natarjan N, Williamson T, Khan S, O'Donnell DE, Kotecha J, and Cave A. Chronic Obstructive Pulmonary Disease in Canadian Primary Care: A CPCSSN Study. *CMAJ Open* 2015;3(1); E15-E22. DOI: 10.9778/cmajo20140040

Harris S,B, **Green ME**, Belle-Brown J, Roberts S, Russell G, Fournie M, Webster-Bogaert S, Kotecha J, Han H, Thind A, Stewart M, Reichert S, Tomkins J and Birtwhistle RV. Impact of a Quality Improvement Program on Primary Healthcare in Canada: A Mixed-methods Evaluation. *Health Policy* 2015; **119**(4): 405-416.

Kotecha J, Han H, **Green ME**, Russell G, Martin M and Birtwhistle RV. The Role of the Practice Facilitators in Ontario Primary Healthcare Quality Improvement. *BMC Family Practice*, 2015; **16**: 93 p 1-8. DOI 10.1186/s12875-015-0298-6

McColl MA, Aiken A, Smith K, McColl A, **Green ME**, Godwin M, Birtwhistle RV, Norman K, Brankston G, Schaub M. Actionable Nuggets: Knowledge translation about special populations for Family Medicine. *Can Fam Phys* 2015; **61**; e240-8.

Kotecha J, Belle Brown J, Han H, Harris SB, **Green ME**, Russell G, Roberts S, Webster-Bogaert S Fournie M, Thind M, Reichert SM, Birtwhistle RV. Influence of a quality improvement collaborative program on team functioning in primary healthcare. *Families, Systems and Health*, 2015; **33**(3): 222-230.

Presentations

Birtwhistle R, Glazier R, **Green ME**, Dahrouge S, **Frymire E**, Barber D, Greiver M, and Terry A. Linking Electronic Medical Records with Administrative Data: Diabetic Control and Hospital and Emergency Room Utilization. Trillium Primary Care Research Day, Toronto, June 4, 2015.

Birtwhistle R, Glazier R, **Green ME**, Dahrouge S, Creiver M, Terry A, Barber D, Martin K and **Frymire E**. Lessons Learned in Linking an EMR with Health Administrative Data: The Case of ICES and CPCSSN. North American Primary Care Research Group Annual Meeting, Cancun, Mexico, Oct 27, 2015.

Birtwhistle R, Glazier R, **Green ME**, Dahrouge S, **Frymire E**, Barber D, Greiver M, and Terry A. Linking Electronic Medical Records with Administrative Data: Diabetic Control and Hospital and Emergency Room Utilization. North American Primary Care Research Group Annual Meeting, Cancun, Mexico, Oct 27, 2015.


Dahrouge S, Muldoon L, Heale R, **Green ME**, **Tranmer J**, Howard M, Mark A, Taljaard M, Brown J, Johnston S and Agarwal G. Creating Meaningful Composite Scores for Primary Care. North American Primary Care Research Group Annual Meeting, Cancun, Mexico, Oct 27, 2015.

Green ME, Harris S, Webster-Bogaert S, Han H, Kotecha J, Koop A, Ho M, Birtwhistle R, and Glazier R. A Population Based Analysis of the Impact of a Provincial Quality Improvement Program on Primary Health Care in Ontario, Canada. Health Services Research Association of Australia and New Zealand Conference, Melbourne, Australia, Dec 7, 2015. *Highly Commended Abstract Award*

Green ME, Walker J, Jacklin K, Jones C, **Frymire E**, Shaw B and Moineddin R. Working Together: A Collaborative Approach to Population Based Health Services Research with First Nations in Ontario, Canada. Health Services Research Association of Australia and New Zealand Conference, Melbourne, Australia, Dec 7, 2015.

Green ME, Jaakimainen L, Reid G, **Frymire E**, Hall-Parber K, Schraeder K, Xu J, Dahrouge S and Glazier R. Access to Primary Health Care and Utilization of Walk in Clinics and Emergency Rooms in Ontario. Canadian Association for Health Services and Policy Research Annual Meeting, Montreal, Quebec, May 27, 2015.

Green ME, Jaakimainen L, Reid G, **Frymire E**, Hall-Parber K, Schraeder K, Xu J, Dahrouge S and Glazier R. Access to Primary Health Care and Utilization of Walk in Clinics and Emergency Rooms in Ontario. 2015 International Health Conference, St. Hugh's College, Oxford, UK, June 25, 2015.



Green ME, Jaakimainen L, Reid G, **Frymire E**, Hall-Barber K, Schraeder K, Xu J, Dahrouge S and Glazier R. Access to Primary Health Care and Utilization of Walk in Clinics and Emergency Rooms in Ontario. Trillium Primary Care Research Day, June 4, 2015.

Green ME. Innovating Indigenous Primary Care in Alberta, CIHR/AHIS funded symposium. Invited facilitator/co-convenor. Calgary, Alberta Jan 22-23, 2016.

Green ME, Walker J, Jones C, Jacklin K, Shah B and **Frymire E**. Reducing the Burden of Diabetes in Ontario First Nations. Poster, Chiefs of Ontario Research Symposium, Toronto, Ontario, Feb 22, 2016.

Green ME, Wabano MJ, and Hopkins C. An new generation in First Nations led health research – the opportunity. Invited panel presentation. Chiefs of Ontario Research Symposium, Toronto, Ontario, Feb 22, 2016.

Green ME. Supporting the conduct and use of patient-oriented research: working with Indigenous people or populations. OSSU Masterclass on Patient Oriented Research, Toronto, April 19, 2016.

Green ME. The Patient's Medical Home in Ontario. BC College of Family Physicians Symposium on the Patient's Medical Home. Vancouver BC, April 29, 2015

Gozdyra P, Dahrouge S, **Frymire E**, Glazier R, **Green ME**, Muldoon L and **Tranmer J**. Geographic Availability, Proximity and Accessibility to Primary Care Doctors: Review and Application of Methods (Workshop). North American Primary Care Research Group Annual Meeting, Cancun, Mexico, Oct 26, 2015.

Martin M, Kotecha J, Han H, MacLaren S, **Green ME**, and Birtwhistle R. Cost to Provide Allied Healthcare to Patients in a Rural Hospital-at-Home Demonstration Program in Prince Edward County, Ontario, Canada. North American Primary Care Research Group Annual Meeting, Cancun, Mexico, Oct 26, 2015.

Smith G*, **Green ME** and Ouellette-Kuntz H. Update of Periodic Health Exams Among Adults with Intellectual and Developmental Disabilities from 2009-2015. Trillium Primary Care Research Day, June 4, 2015.

Wong ST, Haggerty J, Katz A, Wodchis W, Ploeg J, **Green ME**, Kaczorowski J, Liddy C, Grunflod E, Young K, Audas R, Zhang M, Harris S and Fortin M. Opportunities for Cumulative Learning and Implementation of Innovations in Delivery of Primary Health Care Services: What Can be Learned from Canada's 12 PHC Teams? Health Services Research Association of Australia and New Zealand Conference, Melbourne, Australia Dec 9, 2015.

SUPPORTING CANADA'S VULNERABLE POPULATIONS

PROJECT	INVESTIGATORS	FUNDING DETAILS	DURATION
Training Grant for PhD Students to the Queen's/PAHO/WHO Regional Training Centre for Psychiatric and Behavioural Epidemiology	Stuart H	\$90,000 Opening Minds, Mental Health Commission of Canada, Youth Network	2009 – Present
Student Stipend	Stuart H	\$200,000 Bell Canada	Mar 2011 – Mar 2016
Student Stipend	Stuart H	\$50,000 Ken Grewell Family	2012 – 2016
Disability and Primary Care in Bangladesh: AHEAD	Jalovcic D, Pete M, Krupa T, Villeneuve M, Lysaght R, McColl MA	\$5,000,000 Canadian International Development Agency	2012 –2017
Bell Canada Mental Health and Anti-Stigma Research Chair	Stuart H	\$1,000,000 Bell Canada	2012 –2017
The Caring Campus: An Intervention Project	Stuart H, Chen S-P, Krupa T.	\$1,730,000 Movenber Canada	Nov 2013 – Oct 2016
Enhancing Community Participation in Canadians with Physical Disabilities: Development, Implementation and Evaluation of a Partnered Strategy	Martin Ginis K, McBride C, Beauchamp M, Eng J, Miller W, Mortenson W, McColl MA et al.	\$2,643,997 Social Sciences and Humanities Research Council of Canada	Apr 2014 – Apr 2021
Actionable Nuggets™ designed for family physicians to improve the clinical management of patients with chronic obstructive pulmonary disease (COPD)	Smith K, Aiken A, McColl MA, McColl A	\$80,000 GlaxoSmithKline Training Grant for PhD Students to the Queen's/PAHO/WHO Regional Training Centre for Psychiatric and Behavioural Epidemiology	Oct 2015 – Oct 2016
Exploring Stigma, Discrimination and Recovery-based Perspectives Towards Mental Illness and Substance Use Problems Among Primary Health Care Providers Across Ontario	Akwatu K, Corrigan P, Agic B, Bobbili S, Hamilton H, Sapag J, Patten S, Mann R, Stuart H.	\$575,115 CIHR	Apr 2014 – Apr 2016

PROJECT	INVESTIGATORS	FUNDING DETAILS	DURATION
Beyond Silence: Exploring the Impact of Contact-based Education in the Workplace on Early Intervention and Support for Healthcare Workers with Mental Health Issues	Moll SE, MacDermid J, Kirsh B, Stuart H , Patten S.	\$150,000 Ontario Mental Health Foundation	Apr 2014 – Apr 2016
Enhancing community participation in Canadians with physical disabilities: Development, implementation and evaluation of a partnered strategy	Martin-Ginis K, McBride C, Beauchamp, M., Eng, J., Miller, W., Mortenson, W., McColl, M.A. et al.	\$37,713 Social Sciences and Humanities Research Council of Canada	Apr 2014 – Apr 2021
Effects of post-secondary education on daily activity patterns of disabled persons; A measure of social inclusion	Wilson C, McColl MA , Parsons J	\$32,620 Ontario Human Capital Research and Innovation Fund	Sept 2014 – Mar 2015
Wait times for home-based rehabilitation in Ontario	Knott C, McColl MA	\$30,000 Senate Advisory Research Committee/Principal's Development Fund	Sept 2015 – Aug 2016
Student Stipend	Stuart H	\$25,000 Donor, Funds received through Office of Advancement	Sept 2015 – Sept 2017
Caregivers Experience with Symptom Response Kits (SRKs)	Collaborative project with: CHSPR (Knott C); Queen's Palliative Medicine; South East CCAC; and South East LHIN	\$24,000 South East Local Health Integration Network	Jan 2015 – Jan 2016
Spiritual Care in the community following rehabilitation	McColl MA , Elford N, Smith K, Colwell K	\$15,000 Sabbatical Grant	Sept 2014 – July 2015
Wait times for home-based rehabilitation: The impact of rehospitalization	McColl MA, Knott C	\$9,955 Women's Giving Circle Fund Competition	Apr 2014 – May 2015
Wait times for home-based rehabilitation: The impact of rehospitalization	McColl MA, Knott C	\$8,960 Principal's Development Fund and Senate Advisory Committee (SARC)	Apr 2014 – May 2015
Actionable Nuggets for Breast Cancer	Smith K, Aiken A , McColl S, McColl MA , Lucktar Flude M, Langley H	Unfunded Research	Jan 2014 - Present
Actionable Nuggets for COPD	Smith K, Aiken A , McColl S, McColl MA , Lucktar Flude M, Langley H	Unfunded Research	Jan 2014 - Present

SUPPORTING CANADA'S VULNERABLE POPULATIONS

Books and Book Chapters

McColl MA, Pollock N. Measuring occupational performance using a client-centered perspective. In M. Law, C. Baum & W. Dunn (Eds.), *Measuring occupational performance* (3rd ed.). Thorofare, NJ: Slack Inc. 2015

Peer-Reviewed Articles

* Denotes a Student Author

Cameron Duarte JJ, **McColl MA**. Learning client-centred practice: Experience of occupational therapy students interacting with expert patients. *Scandinavian Journal of Occupational Therapy*, 22 (4), 322-324.

Chen S-P*, **Koller M**, Krupa T, **Stuart H**. Contact in the Classroom: Developing a Program Model for Youth Mental Health Contact-Based Anti-stigma Education. *Community Mental Health Journal*, 52(3), 281-293.

Gaebel W, Zaske H, Zielasek JK, Rose Cleveland H, Samjeske K, **Stuart H**, Arboleda-Flórez J, Akiyama T, Baumann AE Gureje O, Krupchanka D, Larach V, Matthews L, Mellsop G, Ndeti DM, Okasha TA, Padalko E, Spurgeoun A, Tyszkowska M, Sartorius N. Stigmatization of Psychiatrists and General Practitioners: Results of an International Survey. *European Archives of Psychiatry and Clinical Neuroscience*, 2015, 265(3): 189-197.

Lucktar-Flude M, **Aiken A**, **McColl MA**, **Tranmer J**. Knowledge, practices and challenges related to implementing breast cancer survivorship guidelines in the primary care setting: Results of a mixed methods study. *European Journal of Cancer Care*, 24 (Suppl 2), 11-12.

Lucktar-Flude M, **Aiken A**, **McColl MA**, **Tranmer J**. A comprehensive framework and key guideline recommendations for the provision of evidence-based breast cancer survivorship care within the primary care setting. *Family Practice*, 32 (2), 129-140.

Lucktar-Flude M, **Aiken A**, **McColl MA**, **Tranmer J**, Langley H. Are primary care providers implementing evidence-based care for breast cancer survivors? *Canadian Family Physician*, 61, 978-984.

McColl MA, **Aiken A**, Smith K, McColl A, **Green ME**, Godwin M, Birtwhistle R, Norman K, Brankston G, Schaub M. Actionable nuggets: knowledge translation tool for the needs of patients with spinal cord injury. *Can Fam Physician*. 2015 May;61(5):e240-8.

McColl MA, **Aiken A**, Schaub M. Do people with disabilities have trouble finding a family physician? *International Journal of Environmental Research and Public Health*, 2015 (12), 4638-4651.

McColl MA, Shortt C, **Bond R***, Shannon D. People with disabilities & the Charter: Disability rights at the Supreme Court of Canada under the Charter of Rights and Freedoms. *Canadian Journal of Disability Studies*. 2016. 5(1), 183-210.

Moll S, Patten SB, **Stuart H**, Kirsh B, MacDermid J. Beyond Silence: Protocol for a Randomized Parallel-group Trial Comparing Two Approaches to Workplace Mental Health Education for Healthcare Employees. *BMC Medical Education*, 2015, 15: 78-87.

Patten SB, Williams JVA, Lavorato DH, Bulloch AGM, Charbonneau M, Gautam M, Moss P, Abbey S, **Stuart H**. Perceived Stigma among Recipients of Mental Health Care in the General Canadian Population. *The Canadian Journal of Psychiatry*, e-publication ahead of print, 2016, 1-9.

Shannon D, Giancarlo A, **McColl MA**. More than voting booths: Accessibility of electoral campaigns for people with disabilities in Ontario. *Canadian Journal of Disability Studies*, 4 (1), 89-110.

Stuart H, Sartorus N, Liinamaa T, Images Study Group. Images of Psychiatry and Psychiatrists. *Acta Psychiatrica Scandinavica*, 2015, 131(1): 21-28.

Presentations

Cramm H, **Aiken A**, **McColl MA**. Mental health and children in military families: A scoping review of issues and needs. The American Occupational Therapy Association, Chicago, IL. April 6, 2016 (podium presentation).

Lucktar-Flude M, **Aiken A**, **McColl MA**, **Tranmer J**. Evidence-based breast cancer survivorship care in southeastern Ontario: A mixed methods study. Annual Kingston Nursing Research Conference, Kingston, Ontario, March 2015 (podium presentation).

Lucktar-Flude M, **Aiken A**, **McColl MA**, **Tranmer J**. Knowledge, practices and challenges related to implementing breast cancer survivorship guidelines in the primary care setting: Results of a mixed methods study. 8th Annual Meeting of the Cancer and Primary Care network Research International Network (CA-PRI): New Partnerships in Primary Care Cancer Research, Aarhus, Denmark, May 2015 (podium presentation).

Lucktar-Flude M, **Aiken A**, **McColl MA**, **Tranmer J**. Implementation of breast cancer survivorship guidelines by primary care nurse practitioners in southeast Ontario: Results of a mixed methods study. Canadian Association of Nurses in Oncology, CANO/ACIO Annual Conference 2015, Toronto, ON, October 2015 (podium presentation).

Lucktar-Flude M, **Aiken A**, **McColl MA**, **Tranmer J**. Primary care provider perceptions of the challenges and opportunities related to providing comprehensive evidence-based breast cancer survivorship care. Canadian Cancer Research Conference, Montreal, PQ, November 2015.

McIntyre L, **Stuart H**, Robertson C. (2015) Education Session: Fighting for Our Members – The Stigma of Mental Health/Addictions and Canadian Nurses Association Policy, Ontario Nurses Association Educational Day, Toronto, Ontario, November 19, 2015 (Invited).

Stuart H. A Rose By Any Other Name: Common Errors in the Use of Epidemiologic Concepts, School of Rehabilitation Therapy, Queen's University, February 11, 2016 (Invited).

Stuart H. Stigma and Recovery: The Eight Deadly Sins. Keynote Address, Inaugural Anti-stigma Conference at St. Joseph's Healthcare, Hamilton, October 7, 2015 (Invited).

Stuart H. Mental Health Stigma: The Eight Deadly Sins. Special Symposium, "Lucha Contra El Estigma", World Association of Social Psychiatry and Sanofi Adventis, Antigua, Guatemala, October 2-5, 2015 (Invited).

Stuart H. The Economic and Social Impact of Mental Health: The Role of Stigma, Roundtable on Workplace Mental Health for Small and Medium Sized Business in Ontario, Sponsored by the Ontario Ministry of Labour, Toronto, September 10, 2015 (Invited).

Stuart H. Stigma: A Human Rights Perspective. SHAD Program, Queen's University, Kingston, July 28, 2015 (Invited).

Stuart H, Bernard M. Breaking the Silence: The 3rd Annual Bell Lecture on Mental Health and Anti-stigma, The Neptune Theatre, Halifax, June 25, 2015 (Invited).

Stuart H. Stigma: A Human Rights Perspective. (Invited Keynote Address) Crisis Services: Innovative and Collaborative Approaches. 31st Annual Crisis Workers Conference, Kingston, Ontario, June 11-12, 2015 (Invited).

Stuart H. Stigma: A Human Rights Perspective. (Invited Keynote Address) Rights for Life National Conference, Glasgow, Scotland, June 2-3, 2015 (Invited).

Thompson K, **Chen S-P***, Dobson K, Stewart S, Davis MacNevin P, Henderson L, **Decaire J, Liinamaa T,** Krupa , **Stuart H,** Teehan M. *The Caring Campus Project – A Intervention to Address Substance Misuse on Canadian campuses.* Panel presented at the 2015 International Conference on Health Promoting Universities and Colleges. Kelowna, BC, June 2015.

Stuart H. Mental Illness Stigma within A Police Culture. XXXIVth International Congress on Law and Psychiatry, International Academy of Law and Mental Health, Sigmund Freud University, Vienna, July 12-17, 2015.

Other Publications

Miller B, Smith E, **Roberts L, McColl MA.** Policy governing support for mobility aids for people with disabilities in Canada. 2015.

Connelly C, **Roberts L, McColl MA.** Policy governing employment supports for people with disabilities in Canada. 2015.

Connelly C, **McColl MA.** Recommendation to the changing workplaces review. Ontario Ministry of Labour. 2015.

CAPACITY BUILDING IN HEALTH SERVICES

PROJECT	INVESTIGATORS	FUNDING SOURCE	DURATION
New Statistical Methods for Population-based Studies of Comparative Effectiveness and Safety of Medications: Development, Validation and Applications	Abrahamowicz M, Bernatsky S, Brophy J, Buckeridge D, Capek R, Delaney C, Dixon W, Ionescu-Ittu R, Lacaille D, Lévesque LE , Levy A, Moride Y, Pilote L, Tamblyn R	\$695,137 CIHR Institute of Population Health	2011 –2016
Technology Evaluation in the Elderly Network	Heyland D, Johnson A , Jeejeebhoy K, Graham T, Mutch D, Duncan A, Mourtzakis M, Pichora D, Bryant T, Tremblay A, Cook D, Muscedere J, Kumar A, Sinuff T, You J, Cohen R, Stajduhar K, Kelley ML, Rodney P	\$45,297,803 Networks Centre of Excellence	2012 –2017
Gender gap in bioequivalent statin use and cardiovascular events amongst elderly patients with diabetes in Ontario	Johnson A , Farahani PN	\$20,000 Queen’s University Department of Medicine	2013 - 2015
Is there an obesity paradox in outcomes following cardiac surgery in Canada?	Johnson A , Parlow J, Milne B	\$7,309 Queen’s University Department of Anaesthesiology and Perioperative Medicine	2013 - 2015
CAN-AIM Team DSEN Targeted Research Prospective Studies	Bermatsky S, Abrahamowicz M, Lévesque LE , Pilote L, Levy A, Moride Y, Rahme E	\$518,000 CIHR Drug Safety and Effectiveness Network	2013 – 2016
Evaluation of blood product utilization, healthcare resource consumption and patient outcomes in novel oral anticoagulant-related bleeding	Johnson A , Schulman S, Dowlatshahi D, Xu Y* , Holbrook A, Simpson A, Wells P, Giulivi A, Heddle N	\$304,406 CIHR Operating Grant - Priority Announcement: Prospective Active Surveillance	2013 – 2016
The Impact of the HPV vaccine on Adolescent Health Outcomes: The Ontario Grade 8 HPV Vaccine Cohort Study	Lévesque LE , Smith LM* , Kaufman J, Strumpf E, Kwong JC	\$282,340 CIHR Human Development, Child and Youth Health	2013 –2016
Annual minimum pediatric anesthesiologist case volume for clinical competence or annual pediatric anesthesiologist case volume in Ontario	Johnson A , Milne B, Parlow J	\$6,436 Queen’s University Department of Anaesthesiology and Perioperative Medicine	2014 - 2015

PROJECT	INVESTIGATORS	FUNDING SOURCE	DURATION
Burden of Disease of Pulmonary Hypertension in Ontario	Dilshan Wijeratne T, Johnson A , Archer S, Brogly S, McClure S, Lougheed D	\$13,702 Queen's University Department of Medicine	2014 - 2015
Thoracic Aortic Disease in Ontario: Occurrence and Treatment	McClure S, Johnson A , Brogly S	\$55,000 CTAQ Endowment Fund	2014 - 2015
Trends and Costs of Spinal Fusion Surgery in Ontario: A Population-Based Study	Johnson A , Xu Y*, Yen D	\$9,605 KGH Medical Research Endowment Fund	2014-2015
Education and Practice in Perioperative Pain Management at Two Academic Centres in Rwanda	Johnson A , Parlow J, Mahaffey R, Goldstein DH, VanDenKerkhof EG, Wilson R, Twagirumugabe T	\$58,205 Canada-Africa Research Exchange Grants (CAREG), Association of Universities and Colleges of Canada (AUCC)	2014 – 2016
The Re-Energize Study – A randomized trial of enteral glutamine to minimize thermal injury: A multi-center, binational, randomized trial	Heyland D, Wischmeyer P, Johnson A , Tredget T, Jeschke M, Logsetty S, Turgeon A, Dal Cin A, Stelfox T, Kemalyan N, Wibbenmeyer L, Foster K, Garrel D, Shaffle J	\$500,000 CIHR	2014 - 2019
Epidemiology of Mitochondrial Disease in Ontario, Canada: Incidence and Treatment	Brogly S, Johnson A , Archer S	\$50,000 USD United Mitochondrial Disease Foundation	2015 - 2016

CAPACITY BUILDING IN HEALTH SERVICES

Books and Book Chapters

Johnson AP, Stukel T (editors). Handbook of Health Services Research – Volume on Medical Practice Variations (26 chapters). 2015 (epub).

Peer-Reviewed Articles

* Denotes a Student Author

Mann EG, **Johnson A**, VanDenKerkhof EG. Frequency and characteristics of healthcare visits associated with chronic pain: results from a population-based Canadian Study. *Canadian Journal of Anesthesia*. 2016 DOI: 10.1007/s12630-015-0578-6.

Farahani P, **Johnson AP**, Whitehead M, Rohland S. Sex/Gender-Based Pharmacology and Statin Utilization amongst elderly patients with diabetes. *Clin Invest Med* 2015; 38 (6): E371-E383.

Johnson AP, Parlow JL, Whitehead M, Xu J, Rohland S, Milne B. Body mass index, outcomes, and mortality following cardiac surgery in Ontario, Canada. *J Am Heart Association*. 2015; 4: 1-13.

VanDenKerkhof EG, Mann EG, Torrance N, Smith BH, **Johnson AP**, Gilron I. An epidemiological study of neuropathic pain in the general population of Canadian adults. *Pain Research and Management*. 2015; 20:1-9.

Johnson AP, Mahaffey R, Rylan E, Parlow JL. Identifying barriers to implementation of postoperative pain management strategies in developing countries: A focus group study in Rwanda. *Pain Resource Management*. 2015.

Presentations

Farahani P, **Johnson AP**, Whitehead M, Rohland S. Gender differences for High potency statin utilization amongst elderly patients with diabetes in Ontario, Canada. The American Diabetes Association's 75th Scientific Sessions – Boston, MA, USA, June 2015 [Diabetes, 2015; 64 (supplement 1): A181]

Farahani P, **Johnson AP**, Whitehead M, Rohland S. Ten-year trends in utilization of bioequivalent doses of statin amongst elderly patients with diabetes. The American Diabetes Association's 75th Scientific Sessions – Boston, MA, USA, June 2015 [Diabetes, 2015; 64 (supplement 1): A177]

Farahani P, **Johnson AP**, Whitehead M, Rohland S. Clinical gaps in statin therapy amongst elderly patients with diabetes according to age and gender. ENDO 2015 – The Endocrine Society's 97th Annual Meeting & Expo – San Diego, CA, USA, March 2015 [Endocrine Reviews, Volume 36, Issue 2 Supplement, FRI-675]



TEACHING AND SUPERVISION

Department of Family Medicine

Clinical Supervision of Residents (Ongoing)
Supervisor: Dr. Michael Green

Resident Research Training
Instructor: Dr. Michael Green

Neonatal Resuscitation Program
Instructor: Dr. Michael Green

Department of Public Health Sciences

Health Economics
Instructor: Dr. Ana Johnson

Public Policy, Politics, and Health Quality
Instructor: Dr. Ana Johnson

Mental Health – Critical Inquiry
Course Designer and Instructor: Dr. Heather Stuart

School of Rehabilitation Therapy

Disability Studies at Bader International Study Centre
Instructor: Dr. Mary Ann McColl

Introduction to Disability Theory
Instructor: Dr. Mary Ann McColl

Theory and Practice in Occupational Therapy
Instructor: Dr. Mary Ann McColl

Spirituality and Occupational Therapy – Concepts and Definitions; Assessment; Intervention
Lecturer: Dr. Mary Ann McColl



STUDENT MENTORSHIP

Postdoctoral Trainees

Cari Hand, Post-doctoral Fellow
Supervisor: Dr. Mary Ann McColl

Christine Knott, Interdisciplinary Fellow
Supervisor: Dr. Mary Ann McColl

PhD Students

Ebenezer Dassah, PhD Rehabilitation Candidate
Co-Supervisor: Dr. Mary Ann McColl

Michelle Koller, PhD Epidemiology Candidate
Supervisor: Dr. Heather Stuart

De-Lawrence Lamptey, PhD Occupational Therapy Candidate
Joint Supervisor: Dr. Mary Ann McColl (Work Study)

Danielle Naumann, PhD Rehabilitation Candidate
Supervisor: Dr. Mary Ann McColl

Jeanette Parsons, PhD Rehabilitation Candidate
Supervisor: Dr. Mary Ann McColl

Heidi Penning, PhD Rehabilitation Candidate
Supervisor: Dr. Mary Ann McColl

Colleen Savage, PhD Public Health Sciences Candidate
Co-Supervisors: Drs. Michael Green, Heather Stuart

Fang Zhang, PhD Candidate
Joint Supervisor: Dr. Mary Ann McColl (Work Study)



MSc Students

Jeff Dixon, MSc Epidemiology Candidate
Primary Co-Supervisor: Dr. Michael Green

Tasha Narain, MSc Candidate
Supervisor: Dr. Heather Stuart

Caroline Petznick, MSc Neurosciences Candidate
Co-Supervisor: Dr. Heather Stuart

Ian Richardson, MSc Public Health Sciences Candidate
Supervisor: Dr. Heather Stuart

Jatinderpreet Singh, MSc Public Health Sciences Candidate
Supervisor: Dr. Michael Green

Glenys Smith, MSc Public Health Sciences Candidate
Co-Supervisor: Dr. Michael Green

Mina Tohidi, MSc Epidemiology Candidate
Supervisor: Dr. Ana Johnson

Hsin Hsiu Yeh, MSc Rehabilitation Candidate
Supervisor: Dr. Mary Ann McColl

Undergraduate Students

Leah Kelley, BSc Life Sciences Candidate
Supervisor: Dr. Ana Johnson

Serena Koscieljew, BSc Life Sciences Candidate
Supervisor: Dr. Ana Johnson

Spencer Pincott, BSc Life Sciences Candidate
Co-Supervisor: Dr. Ana Johnson

Lindsey Telega, BSc Epidemiology Candidate
Supervisor: Dr. Heather Stuart

Yan Xu, BSc Medicine Candidate
Supervisor: Dr. Ana Johnson

CHSPR PERSONNEL

CORE FACULTY



Michael Green, MD, MPH, CCFP

CTAQ Chair in Health Policy/Health Economics
Director, Centre for Health Services and Policy Research
Interim Director, ICES Queen's Health Services Research Facility
Associate Director, Centre for Studies in Primary Care
Associate Professor, Family Medicine; Public Health Sciences
Adjunct Scientist, Institute for Clinical Evaluative Sciences



Mary Ann McColl, PhD, MHSc, MTS

Associate Director, Centre for Health Services and Policy Research
Professor, Public Health Sciences; School of Rehabilitation Therapy



Ana Johnson, PhD, MEcon

Associate Professor, Public Health Sciences
Site Director, ICES Queen's Health Services Research Facility
Core Scientist, Institute for Clinical Evaluative Sciences



Linda Lévesque, PhD, MSc, BScPhm

Associate Professor, Public Health Sciences
Adjunct Scientist, Institute for Clinical Evaluative Sciences



Heather Stuart, PhD, MA

Bell Canada Mental Health and Anti-Stigma Research Chair
Professor, Public Health Sciences; Psychiatry; School of Rehabilitation Therapy
Senior Consultant, Mental Health Commission Opening Minds Anti-Stigma Initiative

ASSOCIATE FACULTY



Alice Aiken, PhD, MSc, BScPT, BScKin
Director, Canadian Institute for Military and Veteran Health Research
Associate Director, School of Rehabilitation Therapy



Christopher Booth, MD
Cancer Care Ontario Chair in Health Services Research
Member, Division of Cancer Care and Epidemiology, Cancer Research Institute
Associate Professor, Medicine; Oncology



Rob Campbell, MSc, MD, FRCSC
Co-Founder, Ophthalmology and Micro-Electromechanical Engineering Research Team
Director, Postgraduate Residency Training Program
Acting Deputy Head and Assistant Professor, Ophthalmology



Diane Lougheed, PhD, MSc
Director, Kingston General Hospital Asthma Program
Director, Hotel Dieu Hospital Adult Cystic Fibrosis Clinic
Associate Professor, Medicine, Division of Respiriology



Paul Masotti, PhD, MHSA
Assistant Professor (Adjunct), Public Health Sciences



Joan E. Tranmer, PhD, MSc, RN, BScN
Professor, School of Nursing



David Walker, MD, FRCPC
Board Chair, Ontario Agency for Health Protection & Promotion
Past Dean, Faculty of Health Sciences
Professor, Department of Emergency Medicine

POSTDOCTORAL FELLOWS



Cari Hand, PhD

Post-Doctoral Fellow

Supervisor: Dr. Mary Ann McColl

Funded By: Transdisciplinary Understanding and Training on Research – Primary Health Care (TUTOR-PHC), Canadian Institutes of Health Research Strategic Training Program



Christine Knott, PhD

Interdisciplinary Fellow

Supervisor: Dr. Mary Ann McColl

Funded by: Technology Evaluation in the Elderly; and Network Centre of Excellence of Canada

GRADUATE STUDENTS



Michelle Koller, MSc

PhD Epidemiology Candidate and Research Associate

Supervisor: Dr. Heather Stuart

Thesis: “Multi-site Evaluation of Contact-Baed Anti-Stigma Programs for High School Youth”

Funded by: Training Grant for PhD Students to the Queen’s/PAHO/WHO Regional Training Centre for Psychiatric and Behavioural Epidemiology



Colleen Savage, MSc

PhD Candidate

Co-Supervisors: Drs. Michael Green and Heather Stuart

Thesis: “Impact of Depression on Co-Morbid Diabetes in Primary Care”



Jatinderpreet Singh, MSc

MSc Epidemiology Candidate

Thesis: “Impact of Patient Rostering & Physician Payment Model on Access to Primary Care.”

Supervisor: Dr. Michael Green

Funded by: Health Services Research Foundation INSPIRE Primary Health Care Project



Yan Xu, BSc

MD Candidate and Fellow, Pharmaceutical Policy Research Collaborative

Co-Investigator, “Evaluation of Blood Product Utilization, Healthcare Resource Consumption and Patient Outcomes in New Oral Anticoagulant-Related Hemorrhage.”

Supervisor: (PI) Dr. Ana Johnson

Funded by: Canadian Institutes of Health Research

RESEARCH STAFF



Joshua Decaire
Research Assistant
The Caring Campus: An Intervention Project



Eliot Frymire, MA
Research Coordinator w/ Dr. Michael Green



Lyndsay Harrison, MSc
Research Associate w/ Dr. Linda Lévesque

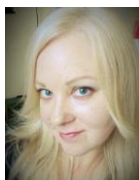


George Konstantinidis, MSc
Research Assistant
The Caring Campus: An Intervention Project



Lynn Roberts
Research Assistant w/ Dr. Mary Ann McColl

ADMINISTRATIVE STAFF



Shari Scanlan
Program Assistant



Lori van Wynsberghe
Facility and Financial Manager

ADVISORY COUNCIL



CHSPR is situated as a free-standing research centre within the Faculty of Health Sciences. Built around a core group of researchers trained in disciplines such as public policy, health economics, epidemiology, biostatics, medicine, social psychology, medical sociology and geography, it enjoys collaborative ties with the School of Policy Studies, the School of Rehabilitation Therapy, Community Health and Epidemiology, and other departments at Queen's.

The Director of CHSPR reports to the Dean of Health Sciences through an Advisory Council. The Council functions in an advisory capacity; it reviews and offers advice on the Centre's annual report and work plan.

ADVISORY COUNCIL MEMBERSHIP

- Associate Dean of Academic Affairs, Faculty of Health Sciences
- Associate Dean of Research, Faculty of Health Sciences
- Director, School of Nursing
- Director, School of Rehabilitation Therapy
- Director, School of Policy Studies
- Head, Department of Public Health Sciences
- Director, Centre for Health Services and Policy Research (ex-officio)

FINANCIAL STATEMENTS

Revenue			
Item	Budgeted	Actual	Variance
Carry Forward	\$363,681	\$363,681	\$0
Projects	\$1,224,176	\$1,224,176	\$0
Total Revenue	\$1,587,857	\$1,587,857	\$0
Expenditures			
Item	Budgeted	Actual	Variance
Salaries and Benefits	\$871,190	\$871,190	\$0
Non-salary Expenses	\$501,877	\$501,877	\$0
Total Expenses	\$1,373,067	\$1,373,067	\$0
Surplus (Deficit)	\$214,790	\$214,790	\$0

Note: Surplus due to timing of expenditures.